

Lake Herman

Summer 2008 Fishing Summary:

- Fishing pressure has increased since 2005.
- Shore fishing pressure was higher than boat fishing pressure.
- Walleye catch and harvest rates met or exceeded management objectives. About 70% of harvested walleyes were more than 14 inches long.
- Yellow perch and bullhead fishing remains slow.
- White bass were present in both the catch and harvest.

The question, "What would you consider to be the best daily limit for panfish (perch, crappies and bluegills)" was asked during the winter 2007-08 and summer 2008 creel surveys. The results are displayed in the following table. The number of responses is in parentheses.

Number of fish/day	Brant Winter 07-08	Thompson Winter 07-08	Madison Lakes ¹ Summer 07-08	Thompson Summer 07-08	Sinai Summer 07-08
5	3% (2)	1% (1)	3% (13)	0% (0)	0% (0)
10	24% (18)	39% (117)	29% (126)	7% (6)	2% (2)
15	26% (19)	20% (60)	20% (88)	16% (15)	13% (16)
20	4% (3)	7% (22)	8% (36)	19% (17)	43% (53)
25	43% (32)	31% (92)	37% (160)	52% (47)	39% (47)
25+	0% (0)	2% (4)	3% (10)	6% (6)	3% (4)
Total	100% (74)	100% (296)	100% (433)	100% (91)	100% (122)

¹ Responses from anglers fishing Lakes Brant, Madison and Herman were combined. Response patterns were similar for each of the three lakes.

Summary:

A 10-fish and 25-fish/day limit were the most frequently given responses to the question. Across all surveys, at least 60% of anglers indicated they wanted limits of 15 or more fish daily. This may have been influenced by the existing 25 panfish/day bag limits currently in place and also by \$3-\$4 gasoline (mentioned often). The response pattern for the Thompson-Sinai creel survey is different for unknown reasons.

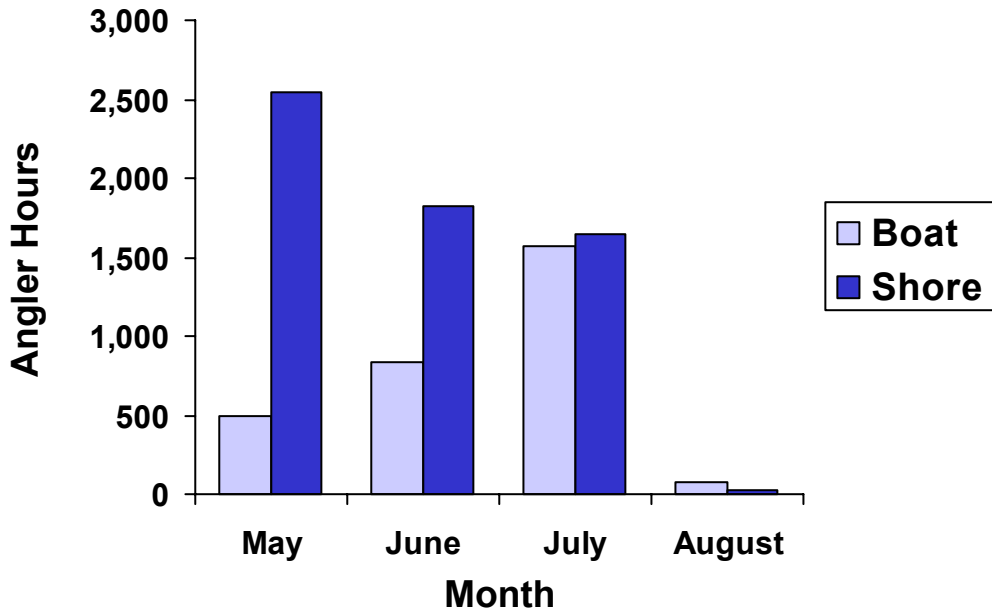


Figure 1. Monthly fishing pressure on Lake Herman during summer 2008.

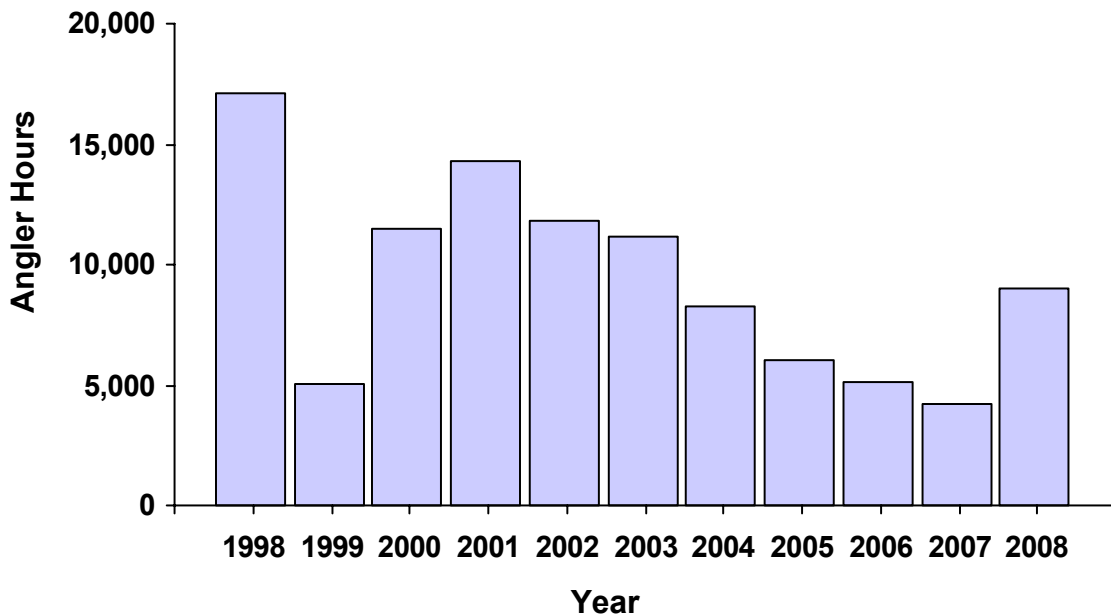


Figure 2. Summer fishing pressure (May through August) on Lake Herman, 1998-2008.

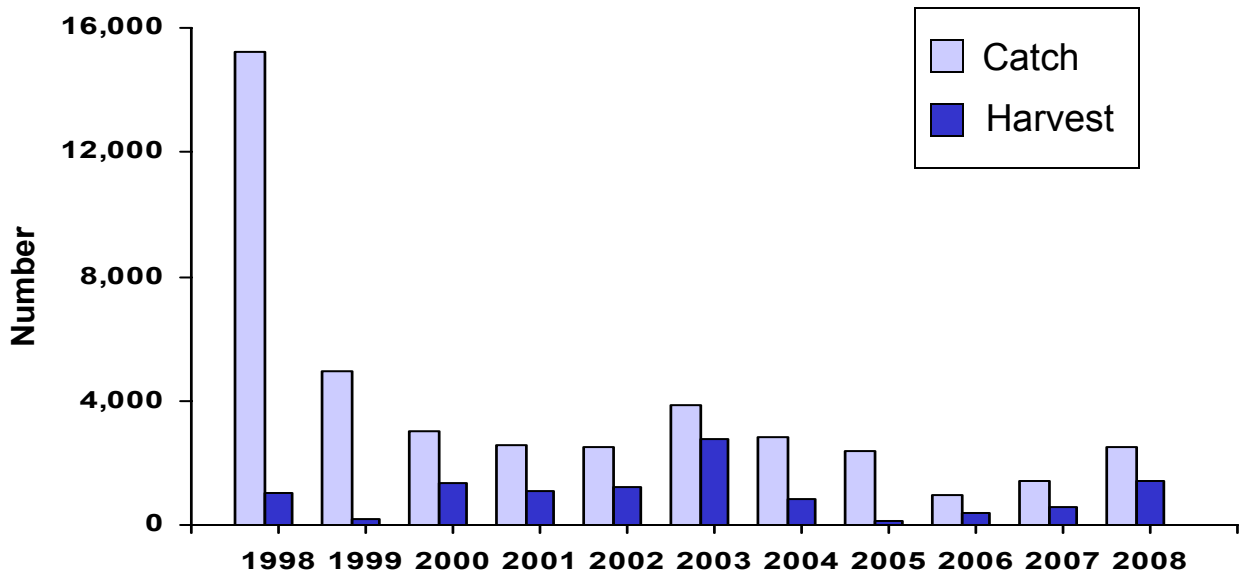


Figure 3. Summer walleye catch and harvest on Lake Herman, 1998-2008.

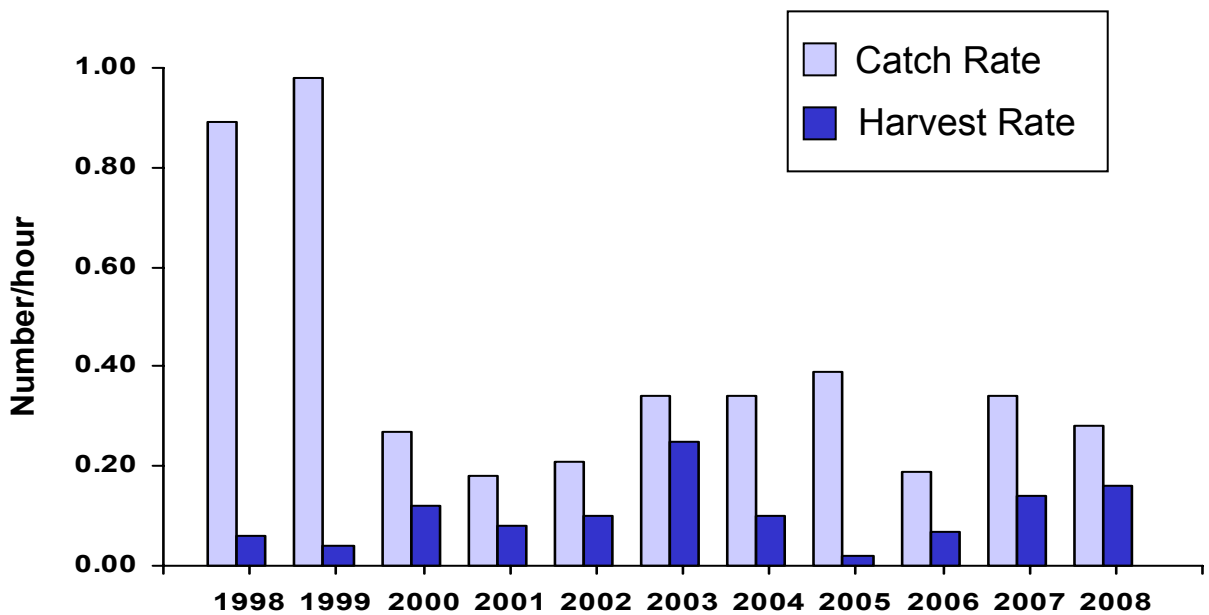


Figure 4. Summer walleye catch and harvest rates on Lake Herman, 1998-2008.

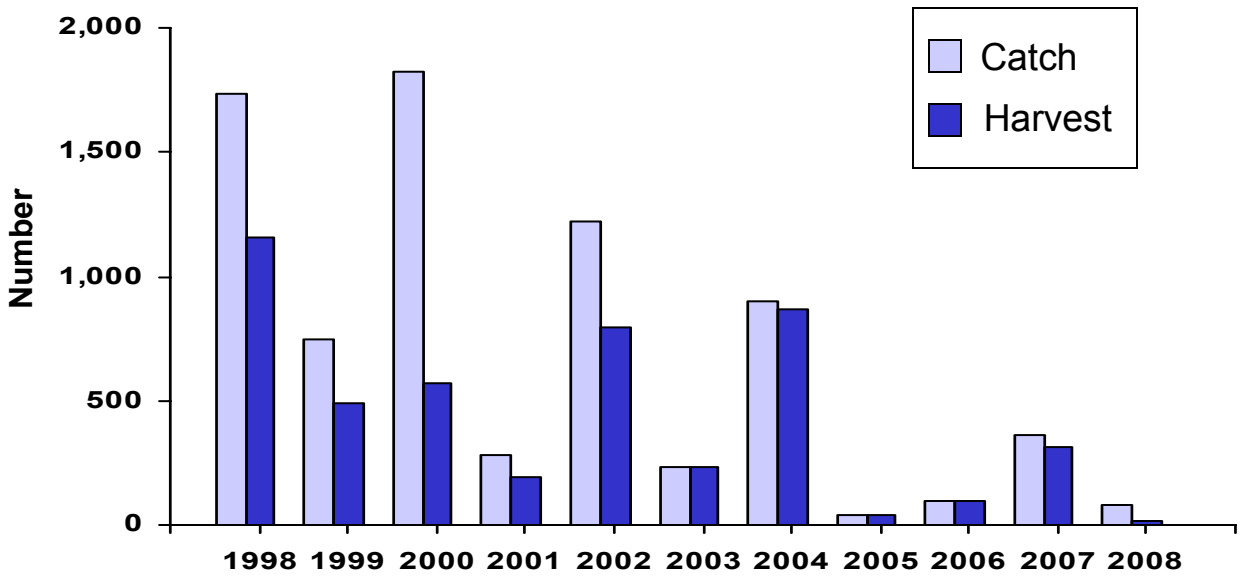


Figure 5. Summer yellow perch catch and harvest on Lake Herman, 1998-2008.

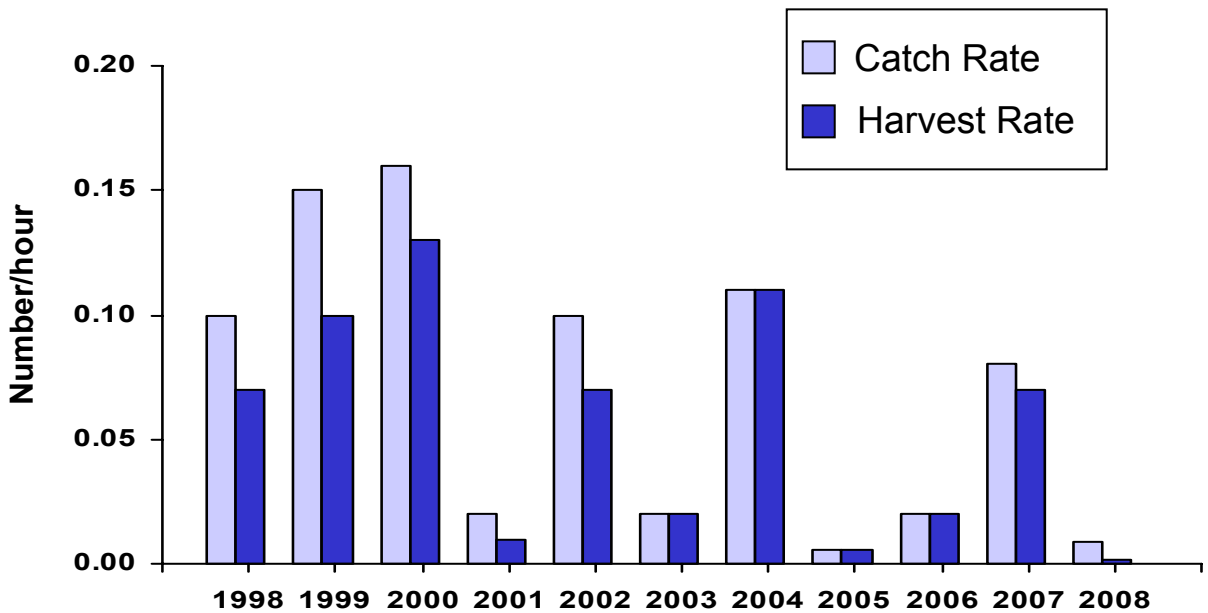


Figure 6. Summer yellow perch catch and harvest rates on Lake Herman, 1998-2008.

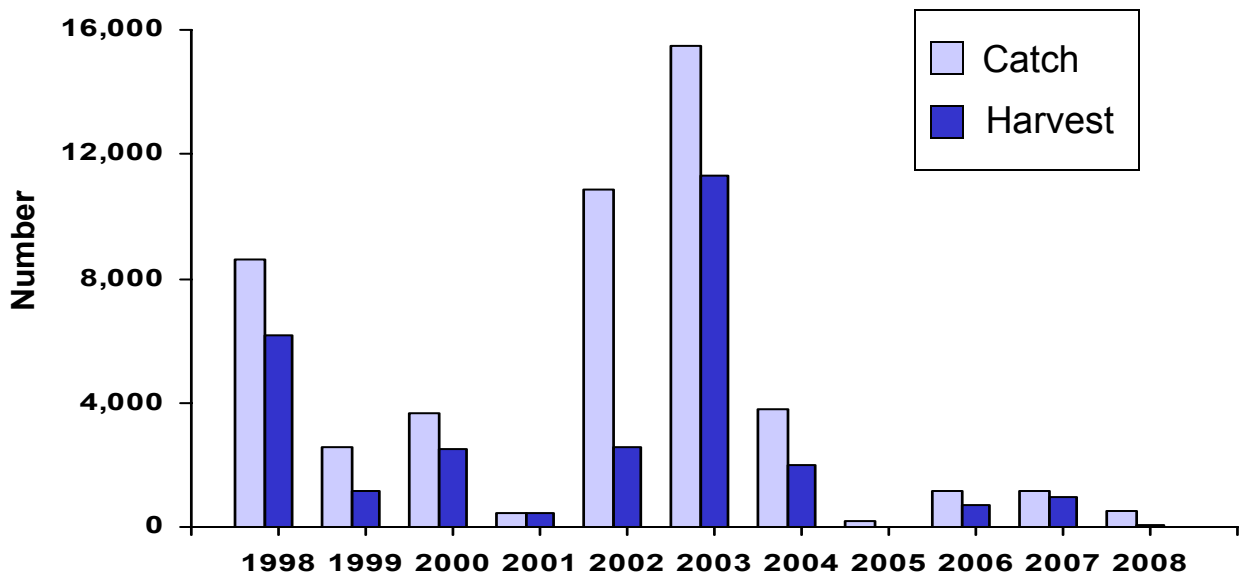


Figure 7. Summer black bullhead catch and harvest on Lake Herman, 1998-2008.

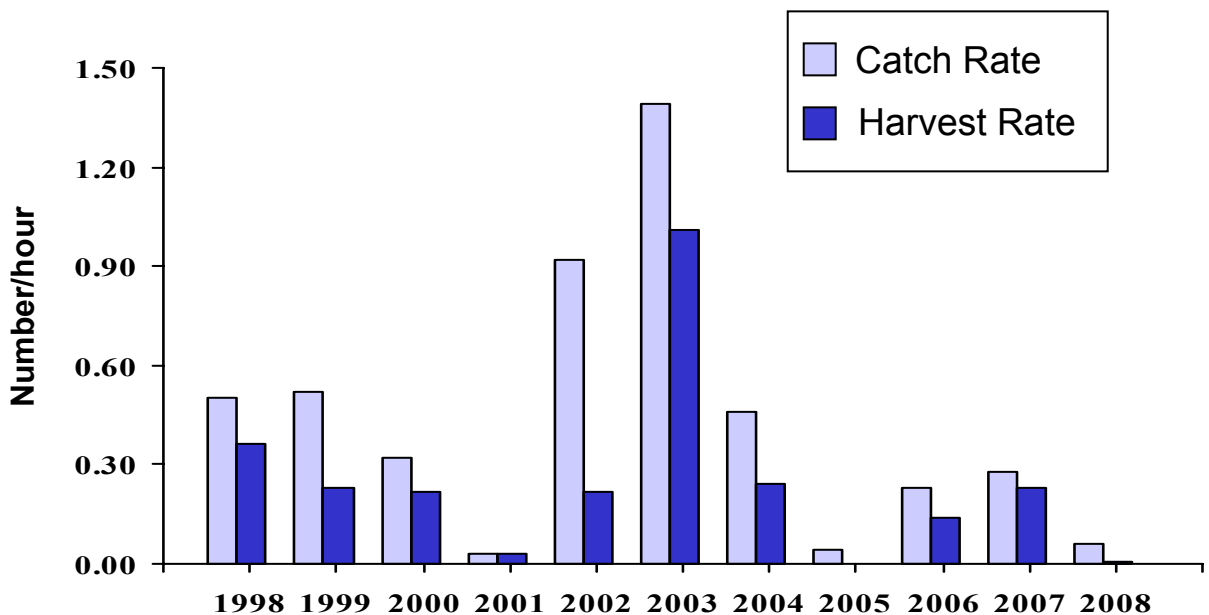


Figure 8. Summer black bullhead catch and harvest rates on Lake Herman, 1998-2008.