

Lake Madison

Summer 2008 Fishing Summary:

- Fishing pressure was up from 2007 and similar to 2006.
- Fishing pressure was highest in May and June and remained reasonably good through late-summer because of good perch fishing.
- Unlike 2007, shore fishing for black crappies was a significant contributor to total fishing pressure in May and June.
- Catch rates for small walleyes were high, but few fish were harvested.
- Yellow perch catch and harvest rates were very good in August. Most of the perch harvested were from the 2005 year class and 9-11 inches long. Smaller fish from the 2007 year class began to show up in the harvest in late-August.
- Black crappie catch and harvest rates increased in 2008. After a 10-year drought from 1994-2003, Madison has provided five consecutive years of good black crappie fishing. Natural reproduction has been relatively consistent over the last couple of years with fish of all sizes in the population.
- Black bullhead catch and harvest rates were at an all-time low.

The question, "What would you consider to be the best daily limit for panfish (perch, crappies and bluegills)" was asked during the winter 2007-08 and summer 2008 creel surveys. The results are displayed in the following table. The number of responses is in parentheses.

Number of fish/day	Brant Winter 07-08	Thompson Winter 07-08	Madison Lakes ¹ Summer 07-08	Thompson Summer 07-08	Sinai Summer 07-08
5	3% (2)	1% (1)	3% (13)	0% (0)	0% (0)
10	24% (18)	39% (117)	29% (126)	7% (6)	2% (2)
15	26% (19)	20% (60)	20% (88)	16% (15)	13% (16)
20	4% (3)	7% (22)	8% (36)	19% (17)	43% (53)
25	43% (32)	31% (92)	37% (160)	52% (47)	39% (47)
25+	0% (0)	2% (4)	3% (10)	6% (6)	3% (4)
Total	100% (74)	100% (296)	100% (433)	100% (91)	100% (122)

¹ Responses from anglers fishing Lakes Brant, Madison and Herman were combined. Response patterns were similar for each of the three lakes.

Summary:

A 10-fish and 25-fish/day limit were the most frequently given responses to the question. Across all surveys, at least 60% of anglers indicated they wanted limits of 15 or more fish daily. This may have been influenced by the existing 25 panfish/day bag limits currently in place and also by \$3-\$4 gasoline (mentioned often). The response pattern for the Thompson-Sinai creel survey is different for unknown reasons.

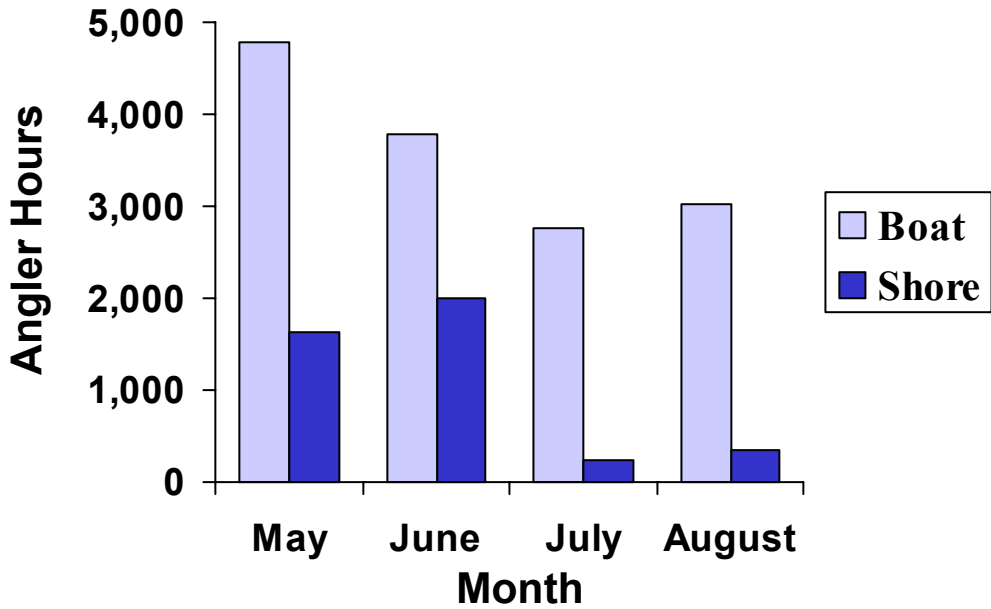


Figure 1. Monthly fishing pressure on Lake Madison during summer 2008.

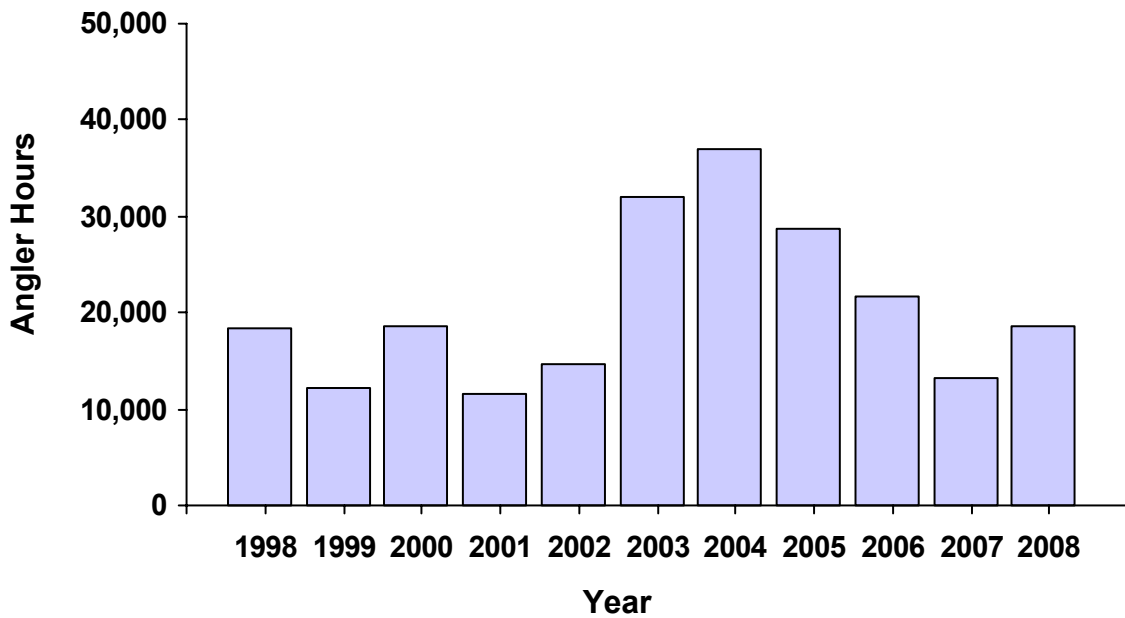


Figure 2. Summer fishing pressure (May through August) on Lake Madison, 1998-2008.

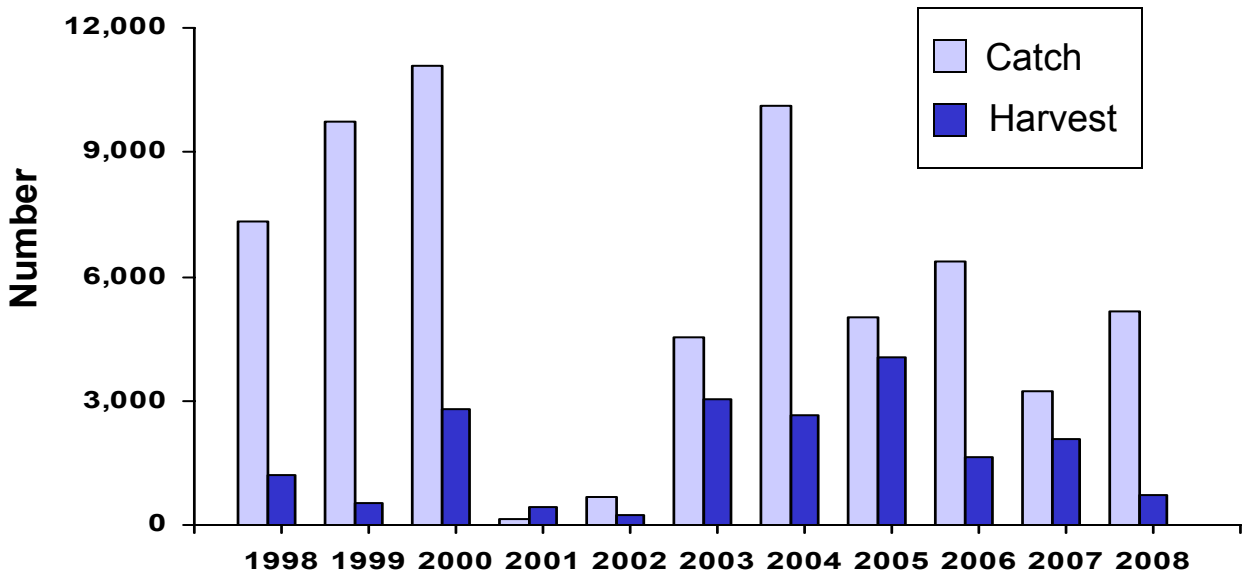


Figure 3. Summer walleye catch and harvest on Lake Madison, 1998-2008.

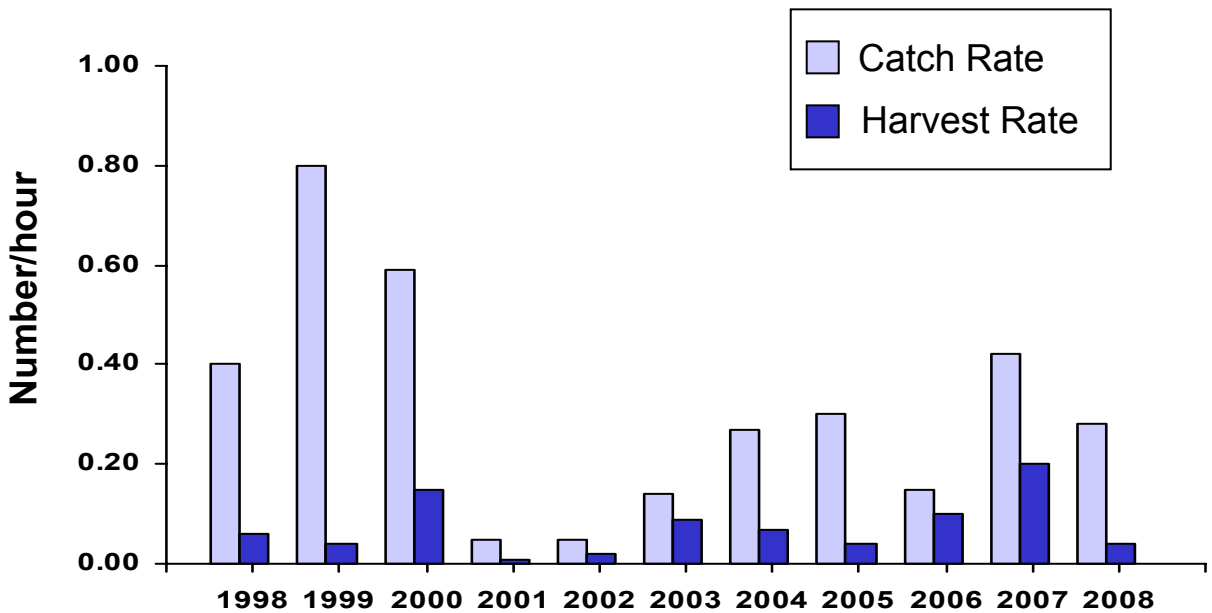


Figure 4. Summer walleye catch and harvest rates on Lake Madison, 1998-2008.

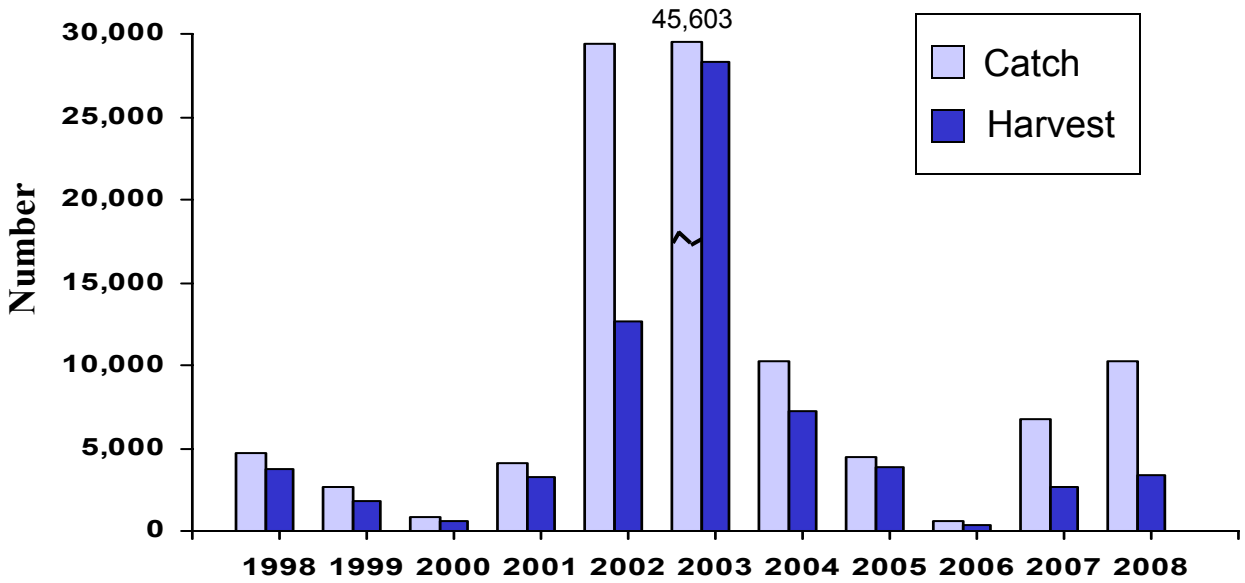


Figure 5. Summer yellow perch catch and harvest on Lake Madison, 1998-2008.

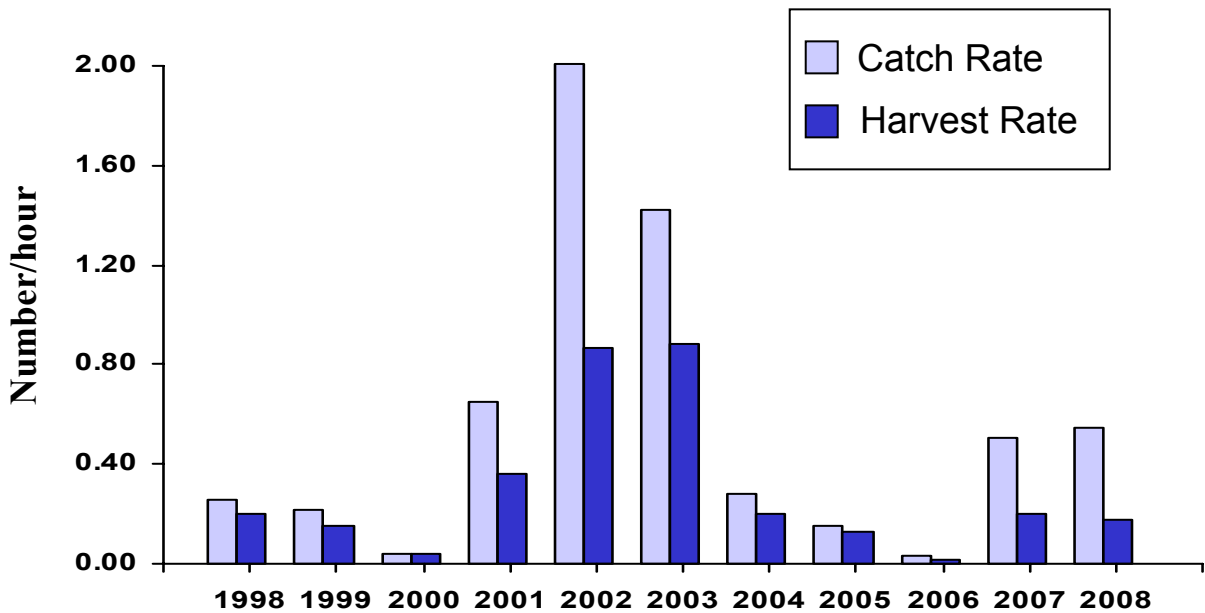


Figure 6. Summer yellow perch catch and harvest rates on Lake Madison, 1998-2008.

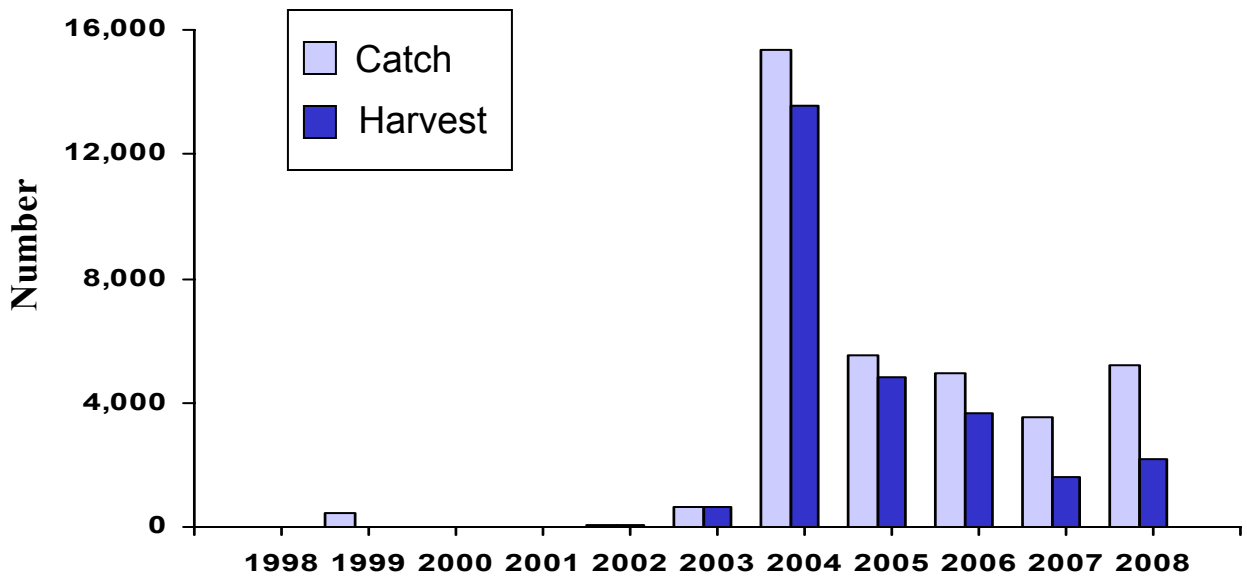


Figure 7. Summer black crappie catch and harvest on Lake Madison, 1998-2008.

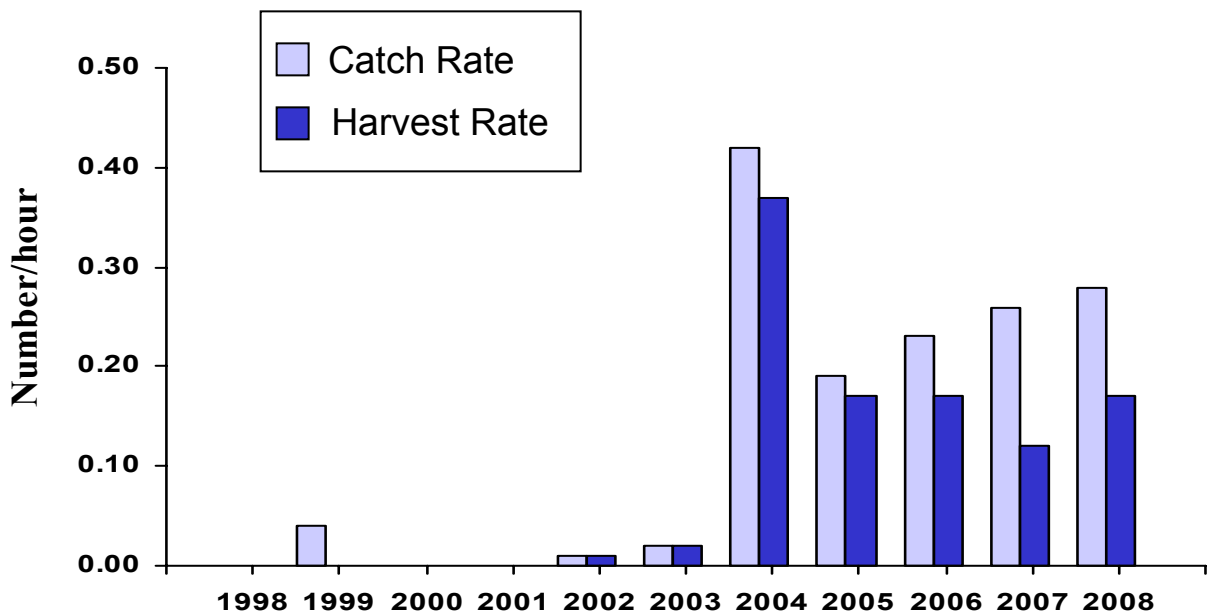


Figure 8. Summer black crappie catch and harvest rates on Lake Madison, 1998-2008.

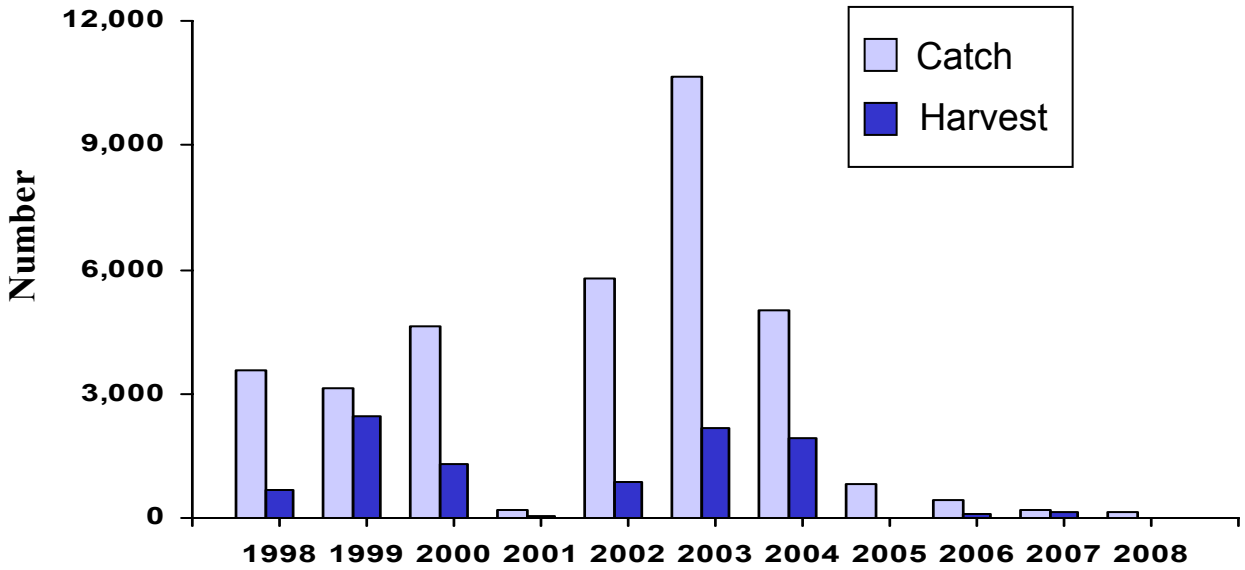


Figure 9. Summer black bullhead catch and harvest on Lake Madison, 1998-2008.

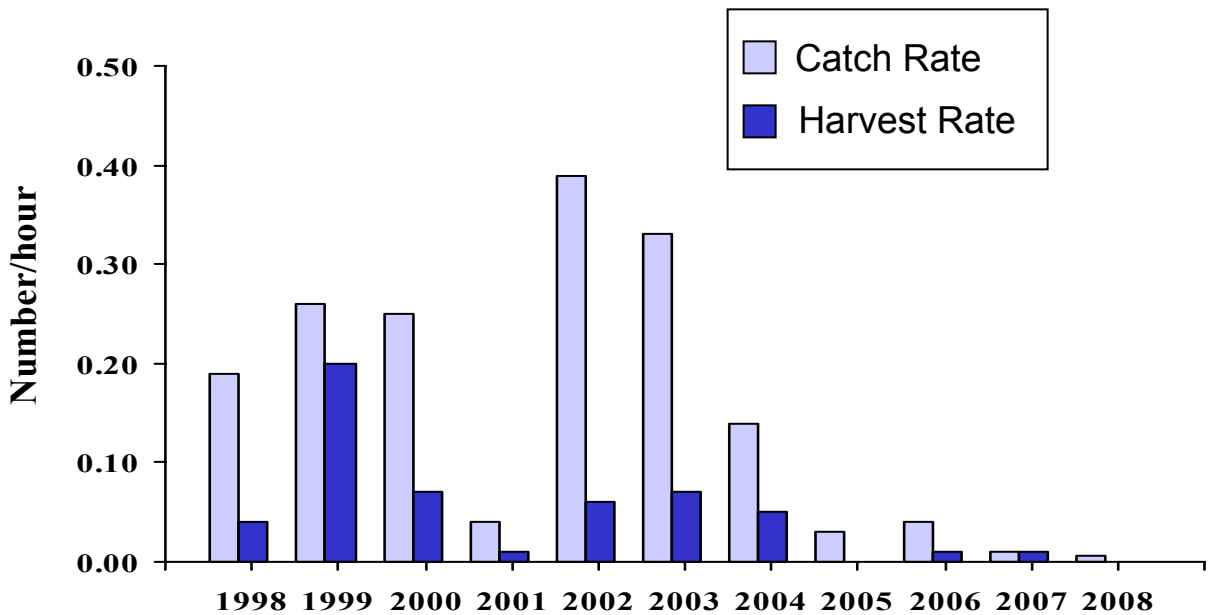


Figure 10. Summer black bullhead catch and harvest rates on Lake Madison, 1998-2008.