

ARCHERY ELK

A total of 202 resident licenses were issued for the 2008 Archery Elk season. All license holders were sent a survey at the end of the season and 186 responded for a 93.9% response rate. Approximately 33% of responding hunters used the Internet response system.

Respondents reported hunting an average of 10.87 days for a total of 2,153 days of recreation. The projected harvest was 47 bulls and 9 cows for an overall success rate of 28%.

Hunter satisfaction was based on a numerical scale from 1 (very dissatisfied) to 7 (very satisfied) and averaged 5.31 for the season.

Prior to 2002 it was assumed that any hunter that did not report harvesting an elk at the mandatory check in was unsuccessful, and success was measured by dividing the number of hunters that reported harvesting an elk by the total number of tags issued.

Harvest comparison of the 1998-2008 Archery Elk seasons

YEAR	Licenses		Harvest			Success	Avg. Days Hunted	Average Satisfaction
	Sold		Bulls	Cows	Total			
1998	120		22	5	27	23%	12.50	NA
1999	130		25	4	29	22%	12.81	NA
2000	123		38	5	43	35%	10.80	NA
2001	140		34	1	35	25%	12.39	NA
2002	151		34	14	49	32%	11.41	5.56
2003	192		48	10	58	30%	11.29	5.53
2004	192		47	12	59	31%	10.95	5.49
2005	267		42	14	56	21%	10.10	5.39
2006	247		30	17	47	19%	10.00	5.12
2007	237		41	22	63	27%	10.58	5.27
2008	202		47	9	56	28%	10.87	5.31

2008 Archery Elk Harvest Projections

Last Revised: 23 March 09

Unit/Type	Resident Licenses					Harvest Projections						Avg Satisfctn Score	Avg Days Hunted	Land Hunted Most		
	Appl. 1st Choice *	Avail.	Sold	Resp.	Success	Bull	Cow	Total Elk	Elk Shot Not	Recovered	Bulls			Cows	Calves	Public
H1A-21	529	25	23	91%	57%	13	0	0	0	13	3	6.0	11.7	22	0	1
H1A-23	1	30	30	93%	10%	0	1	1	1	3	1	5.4	9.9	30	0	0
H2A-21	2,474	55	54	96%	48%	22	3	1	0	26	11	6.2	12.3	51	1	0
H2A-23	10	25	25	96%	4%	0	1	0	0	1	0	5.3	7.2	23	0	0
H3A-21	363	20	20	90%	30%	6	0	0	0	6	3	4.6	12.7	12	2	4
H3A-23	3	10	10	100%	10%	0	1	0	0	1	0	4.9	7.4	9	0	1
H4A-21	13	5	5	80%	# 0%	0	0	0	0	0	0	5.0	6.3	3	0	3
H5A-21	41	5	4	100%	25%	1	0	0	0	1	0	3.8	12.5	4	0	0
H7A-21	215	10	10	100%	50%	3	2	0	0	5	1	4.6	16.8	10	0	0
H7A-23	0	5	5	100%	0%	0	0	0	0	0	0	5.0	14.0	3	0	2
H9A-21	3	2	2	100%	0%	0	0	0	0	0	0	1.5	10.5	2	0	0
H9A-23	0	4	4	100%	0%	0	0	0	0	0	1	3.0	5.0	3	0	1
30A-21	8	2	2	0%	#											
30A-23	0	4	4	100%	0%	0	0	0	0	0	0	2.8	8.3	1	0	3
TOTAL	3,660	202	198	93.9%	28.3%	45	8	2	1	56	20	5.31	10.87	175	3	15

The response rate for all units combined is: 93.9%

Satisfaction scale of 1=very dissatisfied to 7=very satisfied.

Harvest projections were developed for units where response rate was less than 85% and may not be within +/- 15% of the sample statistic.

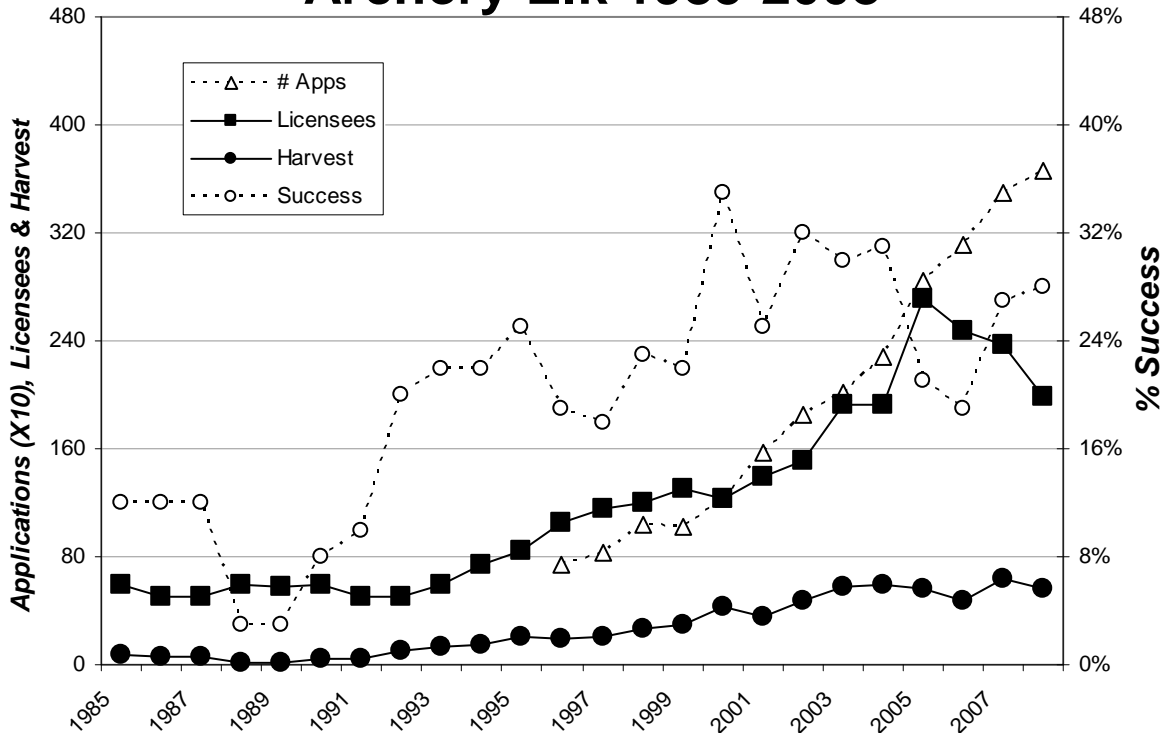
* Number of 1st drawing applicants with that unit as 1st choice.

2008 Archery Elk Harvest Date Distribution

Kill Date	Reported	Percent	Kill Date	Reported	Percent
9/1	0	0.00%	9/16	1	2.04%
9/2	2	4.08%	9/17	4	8.16%
9/3	3	6.12%	9/18	2	4.08%
9/4	1		9/19	1	2.04%
9/5	0	0.00%	9/20	1	2.04%
9/6	3	6.12%	9/21	1	2.04%
9/7	0	0.00%	9/22	0	0.00%
9/8	0	0.00%	9/23	4	8.16%
9/9	0	0.00%	9/24	3	6.12%
9/10	1	2.04%	9/25	2	4.08%
9/11	1	2.04%	9/26	2	
9/12	1	2.04%	9/27	5	10.20%
9/13	3		9/28	4	8.16%
9/14	0	0.00%	9/29	0	0.00%
9/15	1	2.04%	9/30	3	
Total				49	

Weekend dates are in bold

Archery Elk 1985-2008



BLACK HILLS FIREARM ELK

A total of 1,675 licenses were issued for the 2008 Black Hills Firearm Elk season. All license holders were sent a survey at the end of the season and 1,559 responded for a 93.4% response rate (5 surveys were undeliverable). Approximately 33% responded using the Internet response system.

Respondents reported hunting an average of 6.57 days which projects to a total of 11,005 days of recreation for the season. The projected harvest was 473 bulls and 390 cows for an overall success rate of 51.5%.

Hunter satisfaction was based on a numerical scale from 1 (very dissatisfied) to 7 (very satisfied) and averaged 4.62 for the season.

Approximately 82% of responding hunters reported hunting on public land, 12% on private land they do not own, and 6% on private land they own.

Prior to 2002 it was assumed that any hunter that did not report harvesting an elk at the mandatory check in was unsuccessful, and success was measured by dividing the number of hunters that reported harvesting an elk by the total number of tags issued.

Harvest comparison of the 1998-2008 Black Hills Firearm Elk seasons

Year	# Apps 1st Choice	Licenses Sold	Harvest			Success Rate	Avg. Days Hunted	Average Satisfaction
			Bulls	Cows	Total			
1998	10,514	752	335	175	510	67%	6.40	NA
1999	11,120	1,019	435	234	669	66%	6.54	NA
2000	11,953	1,083	467	278	745	69%	6.30	NA
2001	12,114	1,124	440	281	721	64%	6.67	NA
2002	11,998	1,229	400	486	886	72%	6.19	5.70
2003	11,852	1,579	403	653	1,056	67%	6.76	5.32
2004	13,538	1,798	379	722	1,101	61%	5.96	5.22
2005	14,687	2,670	511	884	1,395	52%	6.04	4.83
2006	13,392	2,470	525	833	1,358	55%	6.18	4.55
2007	13,916	2,075	559	505	1,064	51%	6.77	4.52
2008	13,083	1,675	473	390	863	52%	6.57	4.62

*Harvest and success estimates for 2002 include both the regular and extended seasons.

2008 Black Hills Firearm Elk Harvest Projections

Last Revised: 23 March 09

Unit/Type	Resident Licenses					Harvest Projections					Elk Shot Not Recovered	Avg Satisfctn Score	Avg Days Hunted	Land Hunted Most		
	Appl. 1st					Bull	Cow	Total Elk		Harvested				Public	Own	Other Private
	Choice *	Avail.	Sold	Resp.	Success	Calves	Calves	Calves	Calves							
H1A-21	1,408	100	99	97%	56%	43	8	4	0	55	7	4.67	9.0	91	6	1
H1B-23	45	70	70	87%	56%	0	33	5	1	39	2	5.17	5.4	64	0	5
H1C-23	25	70	70	90%	56%	1	32	4	2	39	1	5.00	5.3	61	1	3
H2A-21	8,584	300	300	97%	83%	234	12	2	1	249	19	5.83	6.2	283	9	2
H2B-23	142	100	100	89%	48%	0	45	1	2	48	2	5.28	5.3	85	0	3
H2C-23	37	100	100	95%	55%	5	47	1	2	55	3	5.06	4.9	95	0	1
H2D-23	39	50	50	96%	76%	0	34	3	1	38	2	5.66	4.7	48	0	0
H2E-23	27	50	50	94%	78%	0	37	0	2	39	3	6.11	2.7	46	0	1
H3A-21	1,780	175	174	96%	53%	88	5	0	0	93	5	4.41	7.4	107	36	26
H3B-23	52	150	150	91%	28%	1	35	4	2	42	4	3.59	7.7	109	1	30
H3C-23	16	150	150	91%	22%	1	29	0	3	33	3	3.68	6.4	124	0	18
H4A-21	81	40	40	93%	55%	22	0	0	0	22	0	4.21	5.6	4	19	15
H4B-23	3	40	40	93%	33%	0	13	0	0	13	1	4.68	4.4	9	2	25
H4C-23	0	40	40	92%	30%	0	11	0	1	12	2	4.50	4.0	8	1	25
H5A-21	73	15	16	88%	50%	8	0	0	0	8	0	4.23	8.1	13	3	0
H5B-23	1	5	5	60%	# 0%	0	0	0	0	0	0	3.00	3.3	3	0	0
H5C-23	0	5	5	80%	# 60%	0	3	0	0	3	0	6.50	5.3	4	0	0
H7A-21	707	100	100	95%	41%	36	3	1	1	41	2	3.29	11.7	79	8	7
H7B-23	16	30	31	81%	# 16%	0	5	0	0	5	2	3.53	6.6	22	0	2
H7C-23	5	30	30	97%	20%	0	5	0	1	6	2	3.48	6.6	27	1	0
H9A-21	42	25	25	92%	36%	9	0	0	0	9	0	3.42	6.1	3	9	10
H9B-23	0	15	15	100%	27%	0	4	0	0	4	0	3.69	7.0	4	1	9
H9C-23	0	15	15	93%	33%	0	5	0	0	5	0	4.08	6.4	5	1	8
13,083	1,675	1,675	93.4%	51.2%		448	366	25	19	858	60	4.62	6.57	1,298	102	189

The response rate for all units combined is: 93.4%

Satisfaction scale of 1=very dissatisfied to 7=very satisfied.

Harvest projections were developed for units where response rate was less than 85% and may not be within +/- 15% of the sample statistic.

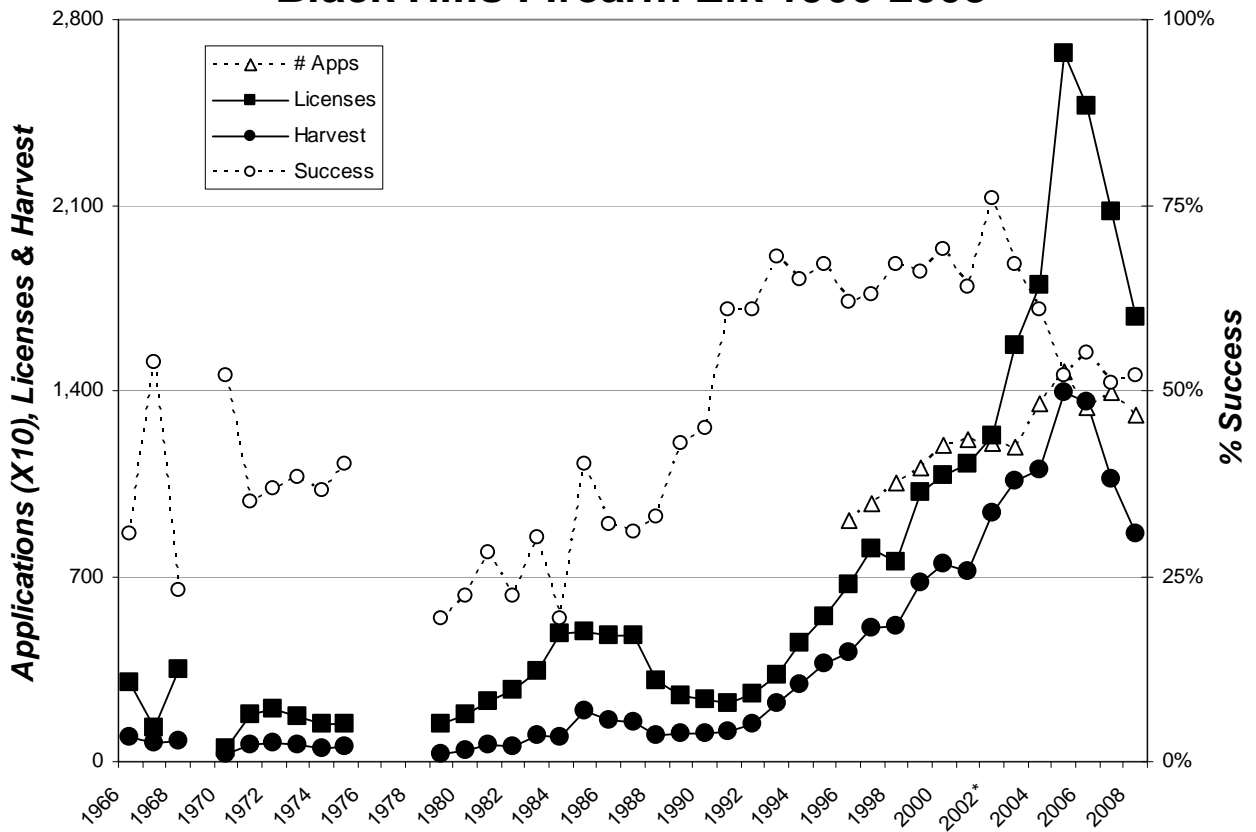
* Number of 1st drawing applicants with that unit as 1st choice.

2008 Black Hills Firearm Elk Harvest Date Distribution

Kill Date	Reported	Percent	Kill Date	Reported	Percent	Kill Date	Reported	Percent
10/1	82	11.13%	10/16	23	3.12%	12/1	21	2.85%
10/2	54	7.33%	10/17	11	1.49%	12/2	8	1.09%
10/3	45	6.11%	10/18	22	2.99%	12/3	14	1.90%
10/4	40	5.43%	10/19	9	1.22%	12/4	8	1.09%
10/5	25	3.39%	10/20	14	1.90%	12/5	8	1.09%
10/6	25	3.39%	10/21	10	1.36%	12/6	25	3.39%
10/7	19	2.58%	10/22	12	1.63%	12/7	8	1.09%
10/8	14	1.90%	10/23	14	1.90%	12/8	4	0.54%
10/9	9	1.22%	10/24	15	2.04%	12/9	4	0.54%
10/10	23	3.12%	10/25	19	2.58%	12/10	2	0.27%
10/11	24	3.26%	10/26	12	1.63%	12/11	6	0.81%
10/12	21	2.85%	10/27	2	0.27%	12/12	8	1.09%
10/13	12	1.63%	10/28	5	0.68%	12/13	8	1.09%
10/14	6	0.81%	10/29	8	1.09%	12/14	3	0.41%
10/15	11	1.49%	10/30	4	0.54%	12/15	7	0.95%
			10/31	13	1.76%			
Total							737	
October							603	81.8%
December							134	18.2%

Weekend dates are in bold

Black Hills Firearm Elk 1966-2008



*2002 elk harvest and success includes regular and special extended season estimates combined.

PRAIRIE FIREARM ELK

A total of 76 licenses were issued for the 2008 Prairie Firearm Elk season. All license holders were sent a survey at the end of the season and 65 responded for an 85.5% response rate. Approximately 33% responded using the Internet.

Respondents reported hunting an average of 7.46 days for a total of 567 days of recreation. The projected harvest was 18 bulls and 17 cows for an overall success rate of 46%.

Hunter satisfaction was based on a numerical scale from 1 (very dissatisfied) to 7 (very satisfied) and averaged 4.29 for the season.

Approximately 76% of responding hunters reported hunting mostly on private land they do not own, 4% on public land and 20% on private land they own.

Prior to 2002 it was assumed that any hunter that did not report harvesting an elk at the mandatory check in was unsuccessful, and success was measured by dividing the number of hunters that reported harvesting an elk by the total number of tags issued.

Harvest summary comparison for 1998-2008 Prairie Firearm Elk seasons

YEAR	Licenses	Harvest			Success	Avg. Days Hunted	Average Satisfaction
	Sold	Bulls	Cows	Total			
1998	38	10	15	25	66%	NA	NA
1999	44	19	8	27	61%	NA	NA
2000	37	12	6	18	49%	NA	NA
2001	42	11	5	16	38%	5.29	NA
2002	46	19	10	29	63%	6.27	4.39
2003	82	25	18	43	52%	6.38	4.31
2004	90	15	16	31	34%	6.40	4.07
2005	89	20	22	42	47%	6.20	4.92
2006	76	20	21	41	54%	5.62	4.30
2007	76	19	16	35	46%	5.87	4.58
2008	76	18	17	35	46%	7.46	4.29

NOTE: Prior to 2001, the prairie units were reported within the regular Black Hills Firearm season. The prairie units were separated into a distinct season in 2001. Unit 15A was switched from the Black Hills season to the Prairie season in 2004.

2008 Prairie Firearm Elk Harvest Projections

Last Revised: 23 March 09

Unit/Type	Resident Licenses				Harvest Projections						Elk Shot Not Recovered	Avg Satisfctn Score	Avg Days Hunted	Land Hunted Most		
	Appl. 1st Choice *	Avail.	Sold	Resp.	Success	Bulls	Cows	Bull Calves	Cow Calves	Total Elk Harvested				Public	Own	Private
11A-21	395	10	10	90%	100%	7	3	0	0	10	1	4.7	5.1	0	4	6
11A-23	7	10	10	90%	100%	0	9	0	1	10	0	6.1	4.2	0	0	10
11B-21	185	8	8	75% #	38%	3	0	0	0	3	0	4.3	8.7	1	3	4
11B-23	6	8	8	88%	13%	0	1	0	0	1	0	3.0	3.4	0	0	6
15A-21	630	10	10	90%	70%	7	0	0	0	7	0	4.8	7.8	0	4	6
15A-23	31	20	20	80% #	15%	0	3	0	0	3	1	3.5	6.1	0	1	14
30A-21	247	2	2	100%	100%	2	0	0	0	2	0	1.0	35.0	0	0	1
30A-23	13	8	8	88%	0%	0	0	0	0	0	1	3.8	12.6	1	0	2
TOTAL	1,514	76	76	85.5%	47.4%	19	16	0	1	36	3	4.29	7.46	2	13	48

The response rate for all units combined is: 85.5%

Satisfaction scale of 1=very dissatisfied to 7=very satisfied.

Harvest projections were developed for units where response rate was less than 85% and may not be within +/- 15% of the sample statistic.

* Number of 1st drawing applicants with that unit as 1st choice.