

# **CANADA GEESE (all seasons)**

Information provided in this section pertains to the entire Canada goose harvest in South Dakota and combines information from all seasons. The next two sections report only on the Early Fall (September) and Special Bennett County seasons.

The 2008 Canada goose season was open from 6 September 2008 - 13 February 2009 statewide, although some units may have opened later and/or closed sooner. The daily bag was 5 geese prior to 27 September; after then it was 3 geese. Possession was twice the daily bag. Resident hunters were separately licensed for one Special Canada goose unit in Bennett County. To hunt geese, residents were required to hold small game, 1-day small game, adult or junior combination or youth small game licenses plus a migratory bird certification. Nonresidents were required to obtain a nonresident waterfowl license. All hunters age 16 and over were also required to obtain a federal waterfowl stamp. Special Canada goose season hunters were required to apply for and receive Special Canada goose season licenses.

In 2008, there were a projected 15,946 hunters who hunted at least one day for Canada geese (13,463 residents, 2,349 nonresidents). From the survey responses, there were a projected total of 103,449 Canada geese harvested (97,068 by residents, 6,381 by nonresidents). Average Canada goose bag for residents was 7.21, for nonresidents 2.57. An estimated 33,227 Canada geese were harvested within 20 miles of the Missouri River.

The five counties with the highest reported harvest by residents were Hughes, Day, Kingsbury, Charles Mix, and Brown, and by nonresidents were Hughes, Day, Roberts, Clark, and Stanley. Approximately 17% of the resident and 13% of the nonresident harvest was reported in Hughes County.

When asked their satisfaction on the season, (1 being least satisfied, 7 being most satisfied), Canada goose hunters reported an average rating of 5.03 for residents and 5.24 for nonresidents. The average days hunted by all hunters (7.21 residents, 3.89 nonresidents) projected to a total of 106,727 recreation days for the season.

## Comparison of the 2000 - 2008 Canada goose harvests:

Year	<i>Resident Hunters</i>					<i>Nonresident Hunters</i>				
	<i>Number Hunters</i>	<i>Harvest</i>	<i>Ave Day Hunted</i>	<i>Ave Bag</i>	<i>Satisfaction</i>	<i>Number Hunters</i>	<i>Harvest</i>	<i>Ave Day Hunted</i>	<i>Ave Bag</i>	<i>Satisfaction</i>
2000	21,863	132,053	7.50	6.04	4.48	2,493	7,130	3.89	2.86	4.85
2001	25,375	142,608	7.51	5.62	4.62	2,499	6,422	4.09	2.57	5.16
2002	22,484	125,236	7.66	5.57	4.59	2,959	7,279	3.75	2.46	4.94
2003	21,860	135,751	7.16	6.21	4.89	3,110	9,050	3.56	2.91	5.18
2004	19,365	100,504	6.98	5.19	4.39	2,481	5,185	3.82	2.09	4.67
2005	15,288	83,167	6.53	5.44	4.65	2,343	4,803	3.84	2.05	4.97
2006	16,103	118,357	7.53	7.35	4.95	2,789	7,419	4.03	2.66	5.21
2007	14,026	94,535	7.24	6.74	4.81	2,349	6,248	3.82	2.66	5.21
2008	13,463	97,068	7.21	7.21	5.03	2,483	6,381	3.89	2.57	5.24

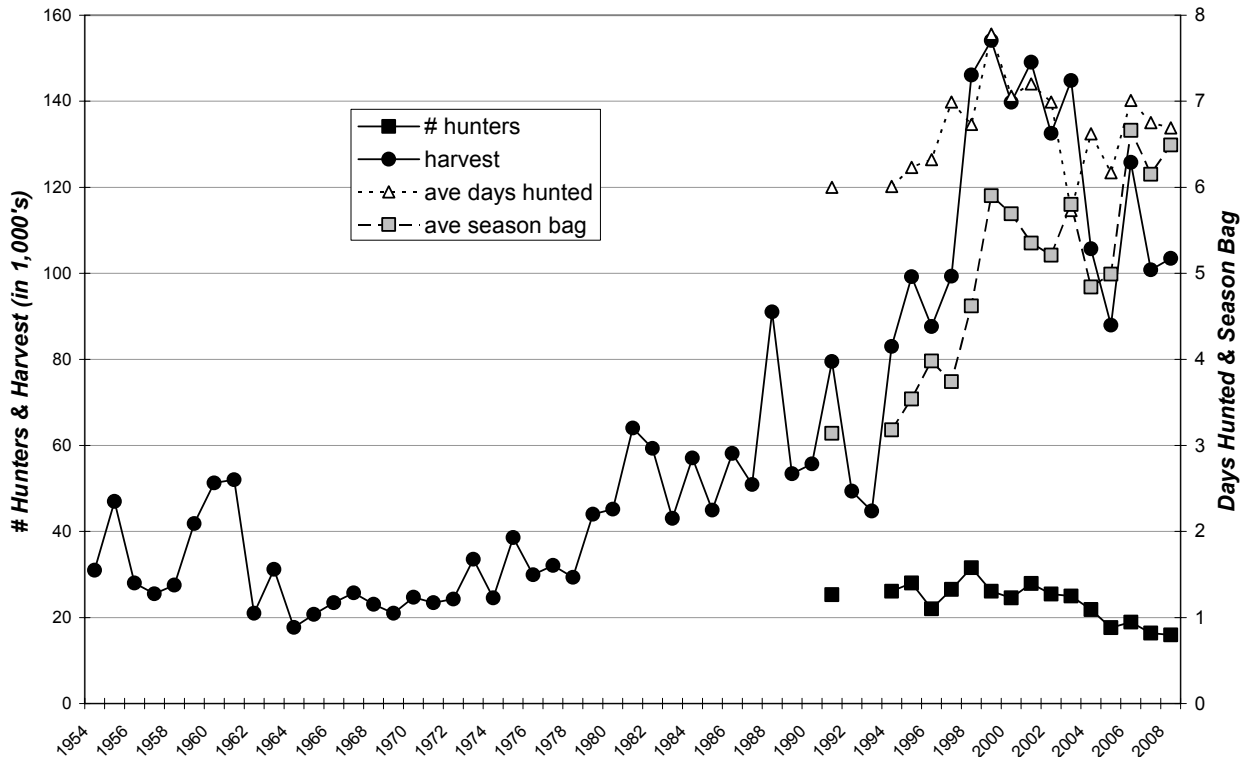
# CANADA GOOSE HARVEST PROJECTIONS FOR 2008

Last Revised: 12 May 09

	Resident	Non Residents
<b>All Seasons:</b>		
No. Hunters Reporting Canada Goose Days	1,074	593
Total Reported Canada Goose Hunted Days	7,748	2,304
<b>Average Days Hunted Canada Geese</b>	<b>7.21</b>	<b>3.89</b>
Total Reported Canada Geese Bagged	7,742	1,526
<b>Average Canada Goose Bag for Season</b>	<b>7.21</b>	<b>2.57</b>
<b>Projected Days Canada Goose Hunting</b>	<b>97,068</b>	<b>9,659</b>
<b>Projected No. Canada Goose Hunters</b>	<b>13,463</b>	<b>2,483</b>
<b>Projected Canada Goose Bag</b>	<b>97,068</b>	<b>6,381</b>
Canada Geese Reported w/in 20 miles of Missouri River	2,467	549
<b>Projected Canada Geese Bagged w/in 20 miles of Missouri River</b>	<b>30,931</b>	<b>2,296</b>
<b>TOTAL CANADA GOOSE HARVEST = 103,449</b>		
<b>Canada Goose Hunter Mean Satisfaction Score *1*</b>	5.03	5.24

\*1\* Based on scale of 1-7 with 1=very dissatisfied & 7=very satisfied

STATEWIDE CANADA GOOSE (all seasons) HARVEST, 1954-2008



## Resident Canada Goose Harvest Distribution by County 2008

COUNTY	HUNTER DISTRIBUTION				HARVEST DISTRIBUTION				Birds/Hunter **
	# Reported	# Projected	% of Total	# Proj w/ Unk *	# Reported	# Projected	% of Total	# Proj w/ Unk *	
Minnehaha	39	489	4.1	546	296	3,711	4.2	4,042	7.6
Pennington	4	50	0.4	56	29	364	0.4	396	7.3
Brown	49	614	5.1	686	354	4,438	5.0	4,834	7.2
Beadle	12	150	1.2	168	79	990	1.1	1,078	6.6
Codington	58	727	6.0	812	341	4,275	4.8	4,656	5.9
Brookings	40	501	4.2	560	257	3,222	3.6	3,509	6.4
Yankton	8	100	0.8	112	62	777	0.9	846	7.8
Davison	7	88	0.7	98	51	639	0.7	696	7.3
Lawrence	3	38	0.3	42	3	38	0.0	41	1.0
Aurora	4	50	0.4	56	1	13	0.0	14	0.3
Bennett	21	263	2.2	294	102	1,279	1.4	1,393	4.9
Bon Homme	11	138	1.1	154	115	1,442	1.6	1,571	10.4
Brule	8	100	0.8	112	59	740	0.8	806	7.4
Buffalo	1	13	0.1	15	1	13	0.0	14	1.0
Butte	2	25	0.2	28	14	176	0.2	192	7.0
Campbell	5	63	0.5	70	28	351	0.4	382	5.6
Charles Mix	37	464	3.9	519	372	4,664	5.2	5,080	10.1
Clark	34	426	3.5	476	324	4,062	4.6	4,424	9.5
Clay	4	50	0.4	56	2	25	0.0	27	0.5
Corson	2	25	0.2	28	3	38	0.0	41	1.5
Custer	0	0	0.0	0	0	0	0.0	0	0
Day	66	827	6.9	924	439	5,504	6.2	5,995	6.7
Deuel	20	251	2.1	281	190	2,382	2.7	2,594	9.5
Dewey	0	0	0.0	0	0	0	0.0	0	0
Douglas	1	13	0.1	15	3	38	0.0	41	2.9
Edmunds	11	138	1.1	154	49	614	0.7	669	4.4
Fall River	3	38	0.3	42	6	75	0.1	82	2.0
Faulk	3	38	0.3	42	26	326	0.4	355	8.6
Grant	25	313	2.6	350	164	2,056	2.3	2,239	6.6
Gregory	0	0	0.0	0	0	0	0.0	0	0
Haakon	0	0	0.0	0	0	0	0.0	0	0
Hamlin	34	426	3.5	476	253	3,172	3.6	3,455	7.4
Hand	1	13	0.1	15	1	13	0.0	14	1.0
Hanson	4	50	0.4	56	3	38	0.0	41	0.8
Harding	2	25	0.2	28	10	125	0.1	136	5.0
Hughes	110	1,379	11.4	1,541	915	11,472	12.9	12,495	8.3
Hutchinson	4	50	0.4	56	16	201	0.2	219	4.0
Hyde	0	0	0.0	0	0	0	0.0	0	0
Jackson	0	0	0.0	0	0	0	0.0	0	0
Jerauld	1	13	0.1	15	2	25	0.0	27	1.9
Jones	0	0	0.0	0	0	0	0.0	0	0
Kingsbury	47	589	4.9	658	386	4,840	5.4	5,272	8.2
Lake	39	489	4.1	546	200	2,508	2.8	2,732	5.1
Lincoln	10	125	1.0	140	53	665	0.7	724	5.3
Lyman	13	163	1.4	182	129	1,617	1.8	1,761	9.9
McCook	14	175	1.5	196	71	890	1.0	969	5.1
McPherson	13	163	1.4	182	203	2,545	2.9	2,772	15.6
Marshall	32	401	3.3	448	339	4,250	4.8	4,629	10.6
Meade	1	13	0.1	15	12	150	0.2	163	11.5
Mellette	1	13	0.1	15	0	0	0.0	0	0.0
Miner	8	100	0.8	112	23	288	0.3	314	2.9
Moody	12	150	1.2	168	31	389	0.4	424	2.6
Perkins	11	138	1.1	154	105	1,316	1.5	1,433	9.5
Potter	2	25	0.2	28	26	326	0.4	355	13.0
Roberts	44	552	4.6	617	316	3,962	4.4	4,315	7.2
Sanborn	5	63	0.5	70	26	326	0.4	355	5.2
Spink	9	113	0.9	126	63	790	0.9	860	7.0
Stanley	18	226	1.9	253	109	1,367	1.5	1,489	6.0
Sully	32	401	3.3	448	324	4,062	4.6	4,424	10.1
Tripp	2	25	0.2	28	12	150	0.2	163	6.0
Turner	6	75	0.6	84	33	414	0.5	451	5.5
Union	6	75	0.6	84	74	928	1.0	1,011	12.4
Walworth	2	25	0.2	28	3	38	0.0	41	1.5
Ziebach	0	0	0.0	0	0	0	0.0	0	0
Shannon	0	0	0.0	0	0	0	0.0	0	0
Todd	0	0	0.0	0	0	0	0.0	0	0
Unk/Unreported	113	1,416	-	-	634	7,949	-	-	5.6
<b>TOTALS:</b>	<b>1,074</b>	<b>13,463</b>	<b>100%</b>	<b>13,465</b>	<b>7,742</b>	<b>97,068</b>	<b>100%</b>	<b>97,061</b>	<b>7.21</b>

Last Revised: 13 May 09

\* Includes unknown county projection values by assuming unknown county values are distributed the same as reported county values. Total values may be different due to rounding.

\*\* Calculation uses "# projected" values without correction for unknown/unreported county values.

## Nonresident Canada Goose Harvest Distribution by County 2008

COUNTY	HUNTER DISTRIBUTION				HARVEST DISTRIBUTION				Birds/Hunter **
	# Reported	# Projected	% of Total	# Proj w/ Unk *	# Reported	# Projected	% of Total	# Proj w/ Unk *	
Minnehaha	1	4	0.2	4	0	0	0.0	0	0.0
Pennington	0	0	0.0	0	0	0	0.0	0	0
Brown	40	167	7.4	184	61	255	4.3	277	1.5
Beadle	3	13	0.6	14	2	8	0.1	9	0.6
Codington	11	46	2.0	51	22	92	1.6	100	2.0
Brookings	4	17	0.8	19	5	21	0.4	23	1.2
Yankton	7	29	1.3	32	41	171	2.9	186	5.9
Davison	0	0	0.0	0	0	0	0.0	0	0
Lawrence	0	0	0.0	0	0	0	0.0	0	0
Aurora	0	0	0.0	0	0	0	0.0	0	0
Bennett	11	46	2.0	51	26	109	1.9	118	2.4
Bon Homme	14	59	2.6	65	59	247	4.2	268	4.2
Brule	6	25	1.1	28	6	25	0.4	27	1.0
Buffalo	0	0	0.0	0	0	0	0.0	0	0
Butte	0	0	0.0	0	0	0	0.0	0	0
Campbell	3	13	0.6	14	3	13	0.2	14	1.0
Charles Mix	13	54	2.4	60	23	96	1.6	104	1.8
Clark	44	184	8.2	203	100	418	7.1	454	2.3
Clay	3	13	0.6	14	2	8	0.1	9	0.6
Corson	1	4	0.2	4	0	0	0.0	0	0.0
Custer	0	0	0.0	0	0	0	0.0	0	0
Day	109	456	20.2	503	231	966	16.4	1,048	2.1
Deuel	10	42	1.9	46	9	38	0.6	41	0.9
Dewey	0	0	0.0	0	0	0	0.0	0	0
Douglas	2	8	0.4	9	0	0	0.0	0	0.0
Edmunds	3	13	0.6	14	4	17	0.3	18	1.3
Fall River	0	0	0.0	0	0	0	0.0	0	0
Faulk	1	4	0.2	4	3	13	0.2	14	3.3
Grant	2	8	0.4	9	1	4	0.1	4	0.5
Gregory	0	0	0.0	0	0	0	0.0	0	0
Haakon	0	0	0.0	0	0	0	0.0	0	0
Hamlin	9	38	1.7	42	14	59	1.0	64	1.6
Hand	1	4	0.2	4	2	8	0.1	9	2.0
Hanson	0	0	0.0	0	0	0	0.0	0	0
Harding	1	4	0.2	4	0	0	0.0	0	0.0
Hughes	46	193	8.6	213	240	1,004	17.1	1,090	5.2
Hutchinson	1	4	0.2	4	3	13	0.2	14	3.3
Hyde	1	4	0.2	4	8	33	0.6	36	8.3
Jackson	0	0	0.0	0	0	0	0.0	0	0
Jerauld	1	4	0.2	4	9	38	0.6	41	9.5
Jones	2	8	0.4	9	5	21	0.4	23	2.6
Kingsbury	13	54	2.4	60	37	155	2.6	168	2.9
Lake	4	17	0.8	19	5	21	0.4	23	1.2
Lincoln	0	0	0.0	0	0	0	0.0	0	0
Lyman	9	38	1.7	42	36	151	2.6	164	4.0
McCook	0	0	0.0	0	0	0	0.0	0	0
McPherson	9	38	1.7	42	8	33	0.6	36	0.9
Marshall	31	130	5.8	143	76	318	5.4	345	2.4
Meade	0	0	0.0	0	0	0	0.0	0	0
Mellette	0	0	0.0	0	0	0	0.0	0	0
Miner	3	13	0.6	14	2	8	0.1	9	0.6
Moody	0	0	0.0	0	0	0	0.0	0	0
Perkins	0	0	0.0	0	0	0	0.0	0	0
Potter	3	13	0.6	14	11	46	0.8	50	3.5
Roberts	59	247	11.0	272	197	824	14.0	894	3.3
Sanborn	0	0	0.0	0	0	0	0.0	0	0
Spink	3	13	0.6	14	4	17	0.3	18	1.3
Stanley	29	121	5.4	133	79	330	5.6	358	2.7
Sully	14	59	2.6	65	28	117	2.0	127	2.0
Tripp	2	8	0.4	9	6	25	0.4	27	3.1
Turner	2	8	0.4	9	11	46	0.8	50	5.8
Union	5	21	0.9	23	23	96	1.6	104	4.6
Walworth	2	8	0.4	9	4	17	0.3	18	2.1
Ziebach	0	0	0.0	0	0	0	0.0	0	0
Shannon	0	0	0.0	0	0	0	0.0	0	0
Todd	0	0	0.0	0	0	0	0.0	0	0
Unk/Unreported	55	230	-	-	120	502	-	-	2.2
<b>TOTALS:</b>	<b>593</b>	<b>2,483</b>	<b>101%</b>	<b>2,480</b>	<b>1,526</b>	<b>6,381</b>	<b>100%</b>	<b>6,382</b>	<b>2.57</b>

Last Revised: 13 May 09

\* Includes unknown county projection values by assuming unknown county values are distributed the same as reported county values. Total values may be different due to rounding.

\*\* Calculation uses "# projected" values without correction for unknown/unreported county values.