

EAST RIVER FIREARM DEER

There were 48,980 licenses issued for the 2008 East River Firearm Deer season (44,411 regular, 401 Special Buck and 4,168 Landowner Own Land Only) for a total of 76,783 total tags.

The East River season was open 16 days from November 15-30 in all units. Beginning December 1, all unused and unsold tags for “any deer” and “any whitetail” converted to their respective antlerless tags. The season was extended from Dec. 1-7 for all unfilled and unsold antlerless deer tags, and again from Jan. 1-9, 2009.

A random sample of 18,446 hunters was taken from the regular East River season, 4,144 from the Landowner Own Land Only licenses, and all 401 Special Buck hunters (1 was undeliverable). The response rates were 80% for the regular East River Deer, 77% for Landowner East River Deer and 85% for Special Buck. Of all responding hunters, 41% of regular West River, 27% of Landowner Own Land and 26% of Special Buck hunters responded over the Internet.

Respondents reported hunting an average of 4.79 days per hunter for the regular season, 4.85 days for Landowner Own Land and 5.72 days for Special Buck, resulting in a projected total of 224,729 recreation days for the entire East River season. Hunters reported harvesting approximately 81% of their deer during the regular season, 7% during the extra week from Dec. 1-7, and 11% during January 1-9.

The East River projected deer harvest was 35,164 for the regular season, 3,080 for Landowner Own Land, and 235 for the Special Buck season. Success rates were 50% for the regular season, 47% for Landowner Own Land, and 59% for Special Buck. Success for the regular East River season “any deer and any antlerless deer” and “any whitetail and antlerless whitetail” license 1st tags (any) was 57% and success for 2nd (antlerless only) tags was 42%. Success for “any antlerless deer and any antlerless deer” and “antlerless whitetail and antlerless whitetail” license 1st tags was 60% and success for 2nd tags was 32%.

The mean satisfaction score for those responding to the regular East River survey was 4.71, for the Landowner Own Land survey was 4.90, and for the Special Buck survey was 4.23 (1 = “very dissatisfied” and 7 = “very satisfied”).

Summary comparison of the 1999-2008 East River Deer seasons (including Special Buck and Landowner)

YEAR	Licenses Sold				Harvest				Total Harvest	Success	Avg Days	Avg Satis
	Resident		Nonres		Bucks		Does					
	Lics	Tags	Lics	Tags	WT	Mule	WT	Mule				
1999	35,373	40,287	213	326	13,294	547	11,196	269	25,306	62%	3.54	4.86
2000	38,129	43,744	238	383	14,641	505	12,170	231	27,547	62%	3.05	4.99
2001	41,550	54,651	452	819	14,835	465	15,276	439	31,015	56%	3.79	4.83
2002	42,714	56,826	503	889	15,365	543	17,489	441	33,838	59%	3.93	5.01
2003	45,846	65,567	837	1,581	15,251	488	21,911	476	38,126	57%	4.40	5.14
2004	47,942	71,443	1,134	2,157	13,953	519	22,991	498	37,961	52%	4.42	4.90
2005	47,649	71,362	1,316	2,462	17,337	559	24,636	535	43,067	58%	4.06	5.01
2006	48,608	74,462	1,506	2,804	17,444	544	23,503	421	41,912	54%	4.56	4.82
2007	48,708	74,502	1,760	3,340	17,609	593	20,311	562	39,075	50%	4.52	4.72
2008	47,308	73,592	1,672	3,191	16,951	646	20,239	642	38,478	50%	4.79	4.71

2008 East River Deer Harvest Projections

Last Revised: 29 April 09

Unit	Licenses				Harvest Projections												Total Deer Harvested	Mean Satisfact Rating	Average Days Hunted	
	Resident		Nonresident		Tags sold	Hunters	Response Rate	Unit/Subunit Success	Whitetail				Mule Deer							
	Avail.	Sold	Avail.	Sold					Bucks	Fawn	Does	Fawn	Bucks	Fawn	Does	Fawn				
Aurora	775	746	leftovers	30	1,302	751	77%	#	59%	210	42	442	75	0	0	0	0	768	4.98	4.65
Beadle	1,550	1,494	leftovers	59	2,305	1,457	81%	#	52%	478	112	536	68	4	4	4	0	1,205	4.79	4.71
Bon Homme	720	717	leftovers	5	922	691	81%	#	60%	145	59	288	41	9	0	14	0	555	4.96	5.33
Brookings	1,300	1,302	leftovers	0	1,601	1,302	79%	#	49%	260	41	418	65	0	0	7	0	791	4.89	4.99
Brown	3,200	2,883	leftovers	175	5,717	2,848	80%	#	47%	921	233	1,332	178	0	0	0	6	2,670	4.63	5.16
Brule	1,650	1,301	leftovers	90	2,782	1,311	77%	#	46%	482	71	479	68	96	7	68	7	1,279	4.86	4.34
Buffalo	400	354	leftovers	47	802	376	77%	#	38%	142	15	82	7	27	2	24	2	301	5.04	3.36
Campbell	710	553	leftovers	57	1,220	553	79%	#	56%	262	46	335	42	4	0	0	0	689	4.71	4.61
Charles Mix	1,150	1,145	leftovers	9	1,504	1,131	82%	#	53%	272	45	335	39	42	6	57	6	802	4.84	4.62
Clark	1,700	1,560	leftovers	100	3,018	1,561	82%	#	39%	387	87	581	118	8	0	8	0	1,189	4.37	4.99
Clay	850	810	leftovers	11	1,071	715	76%	#	41%	167	37	209	30	0	0	0	0	443	4.68	5.49
Codington	1,200	1,172	leftovers	30	1,202	1,080	79%	#	49%	215	61	273	33	0	0	0	3	586	4.41	5.21
Davison	750	736	leftovers	18	754	678	76%	#	64%	221	43	202	17	0	0	2	0	485	4.94	4.74
Day	1,100	1,104	leftovers	0	1,708	1,104	81%	#	49%	282	78	420	51	0	0	3	3	837	4.46	5.25
Deuel	950	952	leftovers	1	1,253	951	82%	#	55%	258	48	330	51	0	0	0	0	688	4.69	4.73
Douglas	600	508	leftovers	6	1,028	500	77%	#	43%	173	47	194	22	2	0	0	0	439	4.86	4.96
E Sully	550	387	leftovers	24	772	389	75%	#	46%	186	30	110	19	4	0	8	0	357	5.07	3.16
Edmunds	1,400	1,222	leftovers	173	2,790	1,263	77%	#	60%	495	111	945	107	0	3	17	0	1,678	5.02	4.37
Faulk	1,300	969	leftovers	104	2,146	992	80%	#	59%	437	101	612	104	6	0	0	3	1,262	5.12	3.81
Grant	900	900	leftovers	0	900	900	76%	#	54%	212	36	195	36	0	0	3	0	482	4.28	5.01
Hamlin	1,000	972	leftovers	29	1,603	975	79%	#	46%	244	57	372	68	0	0	0	0	742	4.57	5.58
Hand	1,050	986	leftovers	63	2,098	971	80%	#	57%	324	114	614	98	14	0	25	6	1,194	5.07	4.50
Hanson	700	694	leftovers	9	703	581	83%	#	54%	126	34	192	20	2	0	2	0	377	4.49	5.22
Hughes	475	474	leftovers	2	876	460	83%	#	50%	164	24	142	13	46	7	35	6	436	5.35	4.19
Hutchinson	750	735	leftovers	16	1,051	727	85%	#	53%	142	51	311	44	2	0	4	0	556	4.57	4.98
Hyde	900	580	leftovers	42	1,244	590	79%	#	50%	296	48	213	33	17	0	11	2	620	5.14	3.85
Jerauld	725	597	leftovers	29	1,091	586	83%	#	54%	192	29	337	16	12	0	0	0	586	5.07	4.33
Kingsbury	1,600	1,587	leftovers	20	2,007	1,560	82%	#	52%	438	83	461	68	0	0	0	0	1,050	4.68	4.30
Lake	800	806	leftovers	0	1,210	806	80%	#	47%	193	47	274	54	0	0	0	0	569	4.31	5.74
Lincoln	450	455	leftovers	0	555	455	87%	#	39%	100	21	82	5	3	0	3	0	215	4.38	5.50
Marshall	1,200	1,107	leftovers	95	2,003	1,180	84%	#	46%	293	64	445	109	6	0	0	0	917	4.36	4.56
McCook	950	957	leftovers	0	1,310	955	81%	#	51%	217	58	329	52	0	0	14	0	670	4.35	4.81
McPherson	1,200	1,015	leftovers	120	1,968	1,040	80%	#	59%	385	100	544	94	15	0	18	3	1,158	5.08	4.00
Miner	1,175	1,022	leftovers	35	1,623	984	79%	#	52%	279	52	463	55	0	0	0	0	849	4.66	4.78
Minnehaha	1,300	1,303	leftovers	0	1,704	1,303	77%	#	39%	183	60	369	46	0	7	0	0	664	4.34	6.12
Moody	700	703	leftovers	0	905	703	79%	#	51%	222	21	180	23	2	0	9	0	458	4.20	5.64
Potter	1,050	814	leftovers	42	1,712	797	80%	#	51%	300	70	358	57	37	5	40	7	874	4.82	3.84
Roberts	1,000	1,000	leftovers	0	1,000	1,000	86%	#	61%	197	50	325	34	0	3	3	0	612	4.25	5.10
Sanborn	900	820	leftovers	32	1,281	767	79%	#	54%	189	65	391	37	0	0	10	5	697	4.95	4.90
Spink	2,200	1,735	leftovers	89	3,349	1,705	80%	#	50%	668	74	848	78	0	0	8	0	1,676	4.74	4.46
Turner	1,000	953	leftovers	14	1,409	897	76%	#	39%	121	62	307	48	3	3	0	0	544	3.93	5.88
Union	800	797	leftovers	4	950	771	82%	#	51%	164	62	238	21	0	0	0	0	485	4.69	4.83
W Sully	600	516	leftovers	24	1,080	521	80%	#	42%	152	21	101	12	64	21	70	16	457	4.97	3.78
Walworth	850	593	leftovers	68	1,322	627	81%	#	55%	280	50	269	52	19	0	34	17	722	5.19	4.22
Yankton	700	703	leftovers	0	953	703	84%	#	56%	189	55	251	35	0	0	0	0	530	4.89	5.78
Totals	46,830	42,739	leftovers	1,672	69,804	42,217	80.0%	#	50%	12,265	2,713	16,736	2,345	445	67	500	92	35,164	4.71	4.79

The response rate for all units combined was 80%

Units less than 85% response rate & harvest projections may not be within +/- 15% of sample statistic.

2008 East River Deer harvest by date

	Total	Nov 15-30	Dec 1-7	January 1-9
Reports	12,090	9,821	905	1,364
Percent of total		81%	7%	11%
Projected	35,164	28,565	2,632	3,967

2008 East River Deer antlerless harvest by date

	Total	Nov 15-30	Dec 1-7	January 1-9
Reports	7,691	5,422	905	1,364
Percent of total		71%	12%	18%
Projected	22,454	15,855	2,632	3,967

2008 East River Deer Harvest Projections

Last Revised: 29 April 09

Unit/Type	Licenses						Harvest Projections										Total Deer Harvest
	Resident			Nonresident			Whitetail				Mule Deer						
	Appl. 1st Choice *	Avail.	Sold	Avail.	Sold	Success	Bucks		Does		Bucks		Does				
							1st tag	2nd tag	Adult	Fawn	Adult	Fawn	Adult	Fawn	Adult	Fawn	
01A-01	1,239	600	604	leftovers	0	42%		183	8	51	4	0	7	0	0	255	
01A-03	44	300	298	leftovers	0	38%		0	10	91	12	0	0	0	0	112	
01A-09	79	400	401	leftovers	0	49%	25%	0	43	226	30	0	0	0	0	296	
03A-01	651	400	399	leftovers	0	62%		183	0	66	0	0	0	0	0	249	
03A-08	1,683	1,600	1,603	leftovers	0	49%	41%	715	81	632	100	0	0	0	0	1,529	
03A-09	75	1,200	881	leftovers	175	54%	27%	23	152	635	78	0	0	0	0	893	
04A-01	771	700	701	leftovers	0	50%		314	7	34	4	4	0	0	0	353	
04A-03	14	100	95	leftovers	5	19%		0	3	11	4	0	0	0	0	19	
04A-08	465	300	302	leftovers	0	62%	60%	165	24	150	34	0	0	0	0	371	
04A-09	29	450	396	leftovers	54	66%	39%	0	77	341	27	0	4	4	0	463	
05A-01	946	500	504	leftovers	0	57%		211	9	67	3	0	0	0	0	285	
05A-03	32	700	668	leftovers	30	43%		4	51	206	30	0	0	0	3	300	
06A-01	1,238	600	603	leftovers	0	56%		260	7	69	3	0	0	0	0	338	
06A-03	46	400	400	leftovers	0	40%		0	10	132	14	0	0	3	0	160	
06A-09	91	300	299	leftovers	0	69%	28%	0	24	217	48	0	0	3	0	293	
07A-01	905	300	303	leftovers	0	68%		189	8	18	2	0	0	0	0	207	
07A-03	25	150	150	leftovers	0	51%		0	9	63	2	0	0	0	0	76	
07A-09	96	250	250	leftovers	0	64%	35%	0	39	169	31	0	0	0	0	247	
08A-11	591	350	354	leftovers	0	70%		207	8	27	5	0	0	0	0	248	
08A-13	30	400	382	leftovers	18	59%		14	35	176	11	0	0	2	0	238	
10A-01	153	50	51	leftovers	0	69%		32	0	2	3	0	0	0	0	35	
10A-13	16	200	178	leftovers	21	46%		0	7	71	13	0	0	0	0	92	
10A-18	591	275	276	leftovers	0	69%	54%	178	13	148	16	0	0	0	0	351	
10A-19	35	250	241	leftovers	9	72%	41%	0	22	221	43	0	0	0	0	290	
12A-01	646	270	272	leftovers	0	67%		140	5	26	2	9	0	0	0	182	
12A-03	23	250	246	leftovers	4	55%		3	25	94	8	0	0	7	0	138	
12A-09	43	200	199	leftovers	1	67%	37%	2	29	167	30	0	0	7	0	236	
13A-08	716	550	552	leftovers	0	56%	38%	202	8	158	19	96	7	68	7	566	
13A-18	139	600	563	leftovers	37	46%	38%	280	47	190	18	0	0	0	0	531	
13A-19	16	500	186	leftovers	53	49%	22%	0	16	130	31	0	0	0	0	181	
14A-08	115	150	150	leftovers	0	46%	38%	37	2	33	4	25	2	22	2	126	
14A-18	13	250	204	leftovers	47	45%	24%	105	13	49	4	2	0	2	0	175	
16A-08	157	10	11	leftovers	0	50%	0%	0	0	0	0	4	0	0	0	6	
16A-18	364	400	404	leftovers	0	64%	48%	262	33	173	23	0	0	0	0	486	
16A-19	13	300	138	leftovers	57	62%	33%	0	13	162	19	0	0	0	0	197	
17A-01	859	200	203	leftovers	0	59%		77	0	5	0	35	0	6	0	121	
17A-03	21	200	200	leftovers	0	56%		0	3	44	13	0	6	42	6	112	
17A-11	586	400	401	leftovers	0	65%		188	3	51	6	6	0	9	0	261	
17A-19	43	350	341	leftovers	9	57%	25%	7	39	235	20	0	0	0	0	309	
18A-01	397	300	302	leftovers	0	49%		136	4	3	7	4	0	0	0	149	
18A-08	866	600	603	leftovers	0	42%	32%	238	22	174	30	0	0	0	0	460	
18A-09	33	800	655	leftovers	100	49%	24%	13	62	403	81	4	0	8	0	580	
19A-01	532	350	350	leftovers	0	53%		160	3	20	0	0	0	0	0	186	
19A-03	5	250	215	leftovers	6	31%		0	10	48	11	0	0	0	0	68	
19A-09	40	250	245	leftovers	5	54%	25%	7	24	142	19	0	0	0	0	190	
22A-03	72	500	500	leftovers	0	60%		0	56	232	16	0	0	0	3	299	
22A-08	1,318	600	604	leftovers	0	51%	35%	282	22	188	35	0	0	3	0	538	
23A-01	477	350	353	leftovers	0	45%		113	5	37	6	0	0	0	0	160	
23A-03	29	300	299	leftovers	1	48%		0	13	121	7	0	0	0	0	143	
23A-08	476	300	300	leftovers	0	61%	66%	145	30	173	37	0	0	0	0	384	
25A-18	403	350	350	leftovers	0	48%	35%	171	32	94	5	2	0	0	0	294	
25A-19	13	250	158	leftovers	6	61%	25%	3	15	100	18	0	0	0	0	145	
26A-08	976	800	799	leftovers	0	63%	47%	474	51	361	41	0	0	3	0	924	
26A-09	27	600	423	leftovers	173	72%	47%	21	60	584	67	0	3	14	0	754	
28A-08	712	700	703	leftovers	0	65%	50%	426	47	339	17	6	0	0	3	832	
28A-09	31	600	266	leftovers	104	65%	35%	11	54	273	86	0	0	0	0	430	
29A-01	961	450	450	leftovers	0	62%		212	8	46	8	0	0	3	0	280	
29A-03	133	450	450	leftovers	0	45%		0	28	149	28	0	0	0	0	202	
32A-01	481	400	399	leftovers	0	53%		145	14	48	3	0	0	0	0	210	
32A-08	359	250	253	leftovers	0	47%	51%	94	19	108	23	0	0	0	0	244	
32A-09	49	350	320	leftovers	29	54%	31%	5	24	216	43	0	0	0	0	287	
33A-08	317	100	102	leftovers	0	66%	34%	49	6	16	6	14	0	14	0	109	
33A-18	638	450	450	leftovers	0	60%	47%	262	38	183	21	0	0	0	0	504	
33A-19	17	500	434	leftovers	63	69%	40%	12	70	415	71	0	0	11	6	581	
34A-01	477	300	303	leftovers	0	61%		111	10	49	0	2	0	0	0	186	
34A-03	25	400	391	leftovers	9	48%		14	25	143	20	0	0	0	0	191	

(Continued next page)

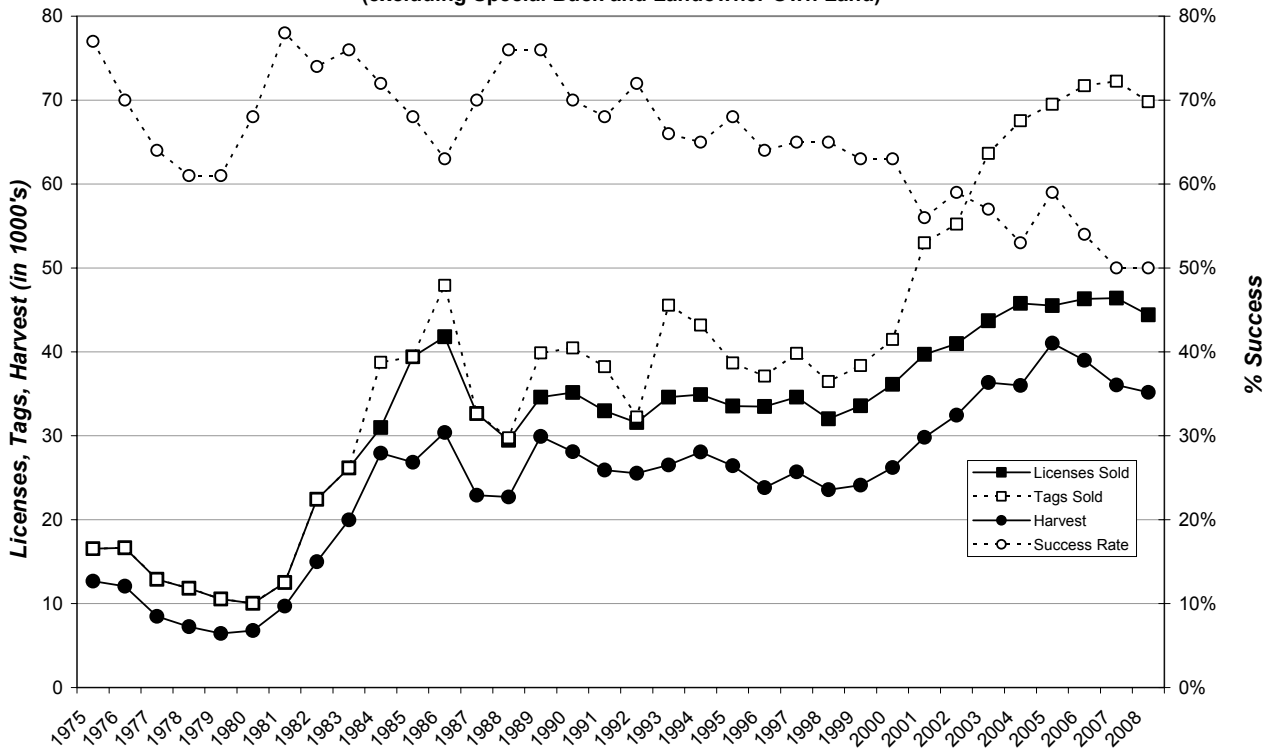
Last Revised: 28 April 09

Unit/Type	Licenses						Harvest Projections										Total Deer Harvest
	Resident			Nonresident			Success		Whitetail				Mule Deer				
	Appl. 1st Choice *	Avail.	Sold	Avail.	Sold	1st tag	2nd tag	Bucks		Does		Bucks		Does			
								Adult	Fawn	Adult	Fawn	Adult	Fawn	Adult	Fawn		
36A-01	146	75	76	leftovers	0	53%		18	2	2	0	20	0	0	0	41	
36A-08	237	100	100	leftovers	0	65%	39%	42	6	32	0	24	2	2	0	107	
36A-09	6	125	123	leftovers	2	63%	39%	3	11	55	9	0	6	32	6	129	
36A-18	66	175	175	leftovers	0	55%	34%	101	5	53	4	2	0	1	0	160	
37A-11	653	250	251	leftovers	0	66%		137	14	28	0	2	0	0	0	167	
37A-13	17	200	191	leftovers	9	42%		5	13	58	4	0	0	0	0	83	
37A-19	45	300	293	leftovers	7	67%	33%	0	24	225	40	0	0	0	0	306	
38A-08	148	50	51	leftovers	0	63%	26%	18	0	6	0	17	0	5	2	48	
38A-18	230	450	441	leftovers	11	63%	37%	272	38	149	22	0	0	0	0	481	
38A-19	3	400	88	leftovers	31	49%	26%	7	10	58	11	0	0	6	0	91	
40A-01	172	50	52	leftovers	0	53%		10	2	4	0	12	0	0	0	28	
40A-13	8	200	102	leftovers	7	45%		0	0	45	2	0	0	0	0	49	
40A-18	389	275	275	leftovers	0	60%	41%	176	13	102	4	0	0	0	0	286	
40A-19	11	200	168	leftovers	22	72%	46%	6	13	186	10	0	0	0	0	223	
42A-01	1,387	900	907	leftovers	0	57%		434	11	79	8	0	0	0	0	513	
42A-03	24	300	285	leftovers	15	48%		0	30	104	5	0	0	0	0	144	
42A-09	93	400	395	leftovers	5	60%	36%	4	43	278	55	0	0	0	0	392	
43A-01	553	200	202	leftovers	0	54%		96	0	13	5	0	0	0	0	109	
43A-03	29	200	200	leftovers	0	42%		0	12	67	4	0	0	0	0	85	
43A-08	379	150	153	leftovers	0	63%	44%	97	16	52	6	0	0	0	0	166	
43A-09	61	250	251	leftovers	0	58%	25%	0	19	143	40	0	0	0	0	209	
44A-01	712	250	255	leftovers	0	45%		100	7	14	0	3	0	0	0	115	
44A-03	19	100	100	leftovers	0	33%		0	7	18	3	0	0	3	0	33	
44A-09	60	100	100	leftovers	0	44%	22%	0	6	50	2	0	0	0	0	66	
46A-01	694	300	304	leftovers	0	57%		144	12	21	2	0	0	2	0	173	
46A-03	30	300	300	leftovers	0	50%		0	12	112	17	0	0	6	0	150	
46A-08	248	150	153	leftovers	0	53%	49%	73	6	70	9	0	0	0	0	156	
46A-09	38	200	200	leftovers	0	62%	33%	0	28	127	24	0	0	6	0	191	
47A-01	308	300	302	leftovers	0	52%		128	6	13	6	5	0	0	0	157	
47A-08	509	400	399	leftovers	0	70%	49%	244	25	177	12	10	0	4	0	475	
47A-09	16	500	314	leftovers	120	65%	40%	13	69	354	75	0	0	14	3	525	
48A-01	418	400	401	leftovers	0	44%		127	9	36	6	0	0	0	0	177	
48A-08	596	400	402	leftovers	0	46%	42%	159	33	130	36	0	0	0	0	359	
48A-09	20	400	304	leftovers	95	62%	30%	7	22	279	67	0	0	0	0	381	
51A-01	394	250	250	leftovers	0	59%		135	0	19	0	0	0	0	0	147	
51A-03	15	300	226	leftovers	15	41%		0	10	73	14	0	0	0	0	100	
51A-08	333	225	225	leftovers	0	59%	31%	140	11	68	6	0	0	0	0	220	
51A-09	29	400	321	leftovers	20	65%	34%	4	30	303	35	0	0	0	0	382	
52A-01	528	400	401	leftovers	0	50%		170	4	30	2	0	0	0	0	202	
52A-03	24	100	100	leftovers	0	47%		0	5	37	3	0	0	0	0	47	
52A-08	227	100	100	leftovers	0	51%	47%	49	4	39	4	0	0	2	0	98	
52A-09	31	100	102	leftovers	0	65%	40%	3	7	73	15	0	0	7	0	110	
54A-08	420	150	151	leftovers	0	73%	40%	72	8	35	15	35	2	14	0	184	
54A-09	8	200	159	leftovers	35	58%	38%	4	31	108	6	0	3	26	6	191	
54A-18	309	450	450	leftovers	0	51%	40%	216	26	164	37	2	0	0	2	435	
54A-19	6	250	54	leftovers	7	71%	36%	9	4	51	0	0	0	0	0	65	
55A-01	1,059	500	500	leftovers	0	59%		197	15	85	2	0	0	0	0	296	
55A-03	79	500	500	leftovers	0	63%		0	35	240	32	0	0	3	0	316	
56A-01	426	250	250	leftovers	0	57%		128	0	3	3	0	0	0	0	143	
56A-03	7	200	167	leftovers	6	52%		0	19	68	0	0	0	4	0	89	
56A-08	192	100	100	leftovers	0	78%	58%	62	10	59	8	0	0	0	0	142	
56A-09	23	350	303	leftovers	26	60%	22%	0	35	260	26	0	0	6	5	323	
57A-01	347	300	299	leftovers	0	61%		154	9	14	5	0	0	0	0	184	
57A-08	1,008	1,000	1,003	leftovers	0	57%	48%	514	31	513	37	0	0	0	0	1,096	
57A-09	32	900	433	leftovers	89	48%	28%	0	34	322	36	0	0	8	0	396	
59A-08	488	150	156	leftovers	0	65%	27%	42	2	19	0	64	2	18	4	149	
59A-09	9	250	160	leftovers	24	49%	24%	0	10	38	3	0	19	52	12	142	
59A-18	46	200	200	leftovers	0	56%	24%	111	9	44	10	0	0	0	0	166	
59B-01	51	50	50	leftovers	0	58%		28	0	2	0	0	0	0	0	29	
59B-08	178	300	284	leftovers	16	53%	41%	153	26	90	19	1	0	2	0	288	
59B-09	1	200	53	leftovers	8	46%	23%	5	4	18	0	3	0	5	0	40	
61A-01	647	250	255	leftovers	0	48%		113	0	20	0	3	0	0	0	123	
61A-03	20	300	267	leftovers	3	33%		0	10	59	16	0	0	0	0	90	
61A-09	38	450	431	leftovers	11	49%	20%	8	52	228	32	0	0	0	0	331	
62A-01	683	350	352	leftovers	0	53%		164	5	13	0	0	0	0	0	186	
62A-03	20	300	296	leftovers	4	45%		0	26	104	5	0	0	0	0	134	
62A-09	51	150	149	leftovers	0	70%	38%	0	31	121	16	0	0	0	0	166	
63A-08	349	50	50	leftovers	0	72%	39%	14	0	14	3	18	0	3	0	56	
63A-09	9	100	67	leftovers	33	78%	42%	0	8	55	12	2	0	29	17	119	
63A-18	173	400	400	leftovers	0	65%	40%	259	21	125	23	0	0	2	0	428	
63A-19	1	300	76	leftovers	35	69%	38%	7	21	76	14	0	0	0	0	120	
Totals	40,049	46,830	42,739	leftovers	1,672	1st tag	2nd tag	12,265	2,713	16,736	2,345	445	67	500	92	35,164	
						Any + antls=	42%										
						Antls + antls=	60%										

* Number of 1st drawing applicants with that season as 1st choice.

East River Deer Regular Season 1975-2008

(excluding Special Buck and Landowner Own Land)



2008 East River Deer LOL Harvest Projections

Last Revised: 27 April 09

Unit/Type	Licenses		Tags sold	Response Rate	Tag Success	Harvest Projections				Total Deer Harvest	Mean Satisfactn Rating	Average Days Hunted
	Avail.	Sold				Whitetail		Mule Deer				
					Bucks	Does	Bucks	Does				
LO-ST-01	Unitd	1,756	1,756	80%	48%	682	103	60	1	847	4.78	4.52
LO-ST-03	Unitd	2	2	0%								
LO-ST-08	Unitd	2,402	4,804	74%	46%	1,086	1,044	54	49	2,234	4.99	5.12
LO-ST-09	Unitd	8	16	100%	0%	0	0	0	0	0		0.50
Totals		4,168	6,578	76.5%	47%	1,768	1,147	115	50	3,080	4.90	4.85

Units less than 85% response rate & harvest projections may not be within +/- 15% of sample statistic.

2008 East River LOL Harvest Distribution

Last Revised: 27 Apr 09

County	Reported Harvest					Projected Harvest					Projected	%
	Whitetail		Mule Deer		Total	Whitetail		Mule Deer		Total		
	Bucks	Does	Bucks	Does		Bucks	Does	Bucks	Does			
Minnehaha	22	8	0	0	30	31	12	0	0	43	1.4%	
Brown	35	33	1	0	69	50	49	1	0	100	3.3%	
Beadle	50	40	0	0	90	71	59	0	0	130	4.2%	
Codington	16	17	0	0	33	23	25	0	0	48	1.6%	
Brookings	35	25	0	0	60	50	37	0	0	87	2.8%	
Yankton	47	22	0	0	69	67	33	0	0	99	3.2%	
Davison	20	14	3	0	37	28	21	4	0	53	1.7%	
Aurora	55	20	0	0	75	78	30	0	0	108	3.5%	
Bon Homme	30	20	0	0	50	43	30	0	0	72	2.3%	
Brule	28	23	6	9	66	40	34	8	13	95	3.1%	
Buffalo	10	2	1	0	13	14	3	1	0	19	0.6%	
Campbell	21	14	7	11	53	30	21	10	16	76	2.5%	
Charles Mix	91	36	25	4	156	129	53	35	6	223	7.2%	
Clark	26	16	0	0	42	37	24	0	0	61	2.0%	
Clay	9	6	0	0	15	13	9	0	0	22	0.7%	
Day	33	22	0	0	55	47	33	0	0	80	2.6%	
Deuel	5	10	1	1	17	7	15	1	1	25	0.8%	
Douglas	27	13	0	0	40	38	19	0	0	58	1.9%	
Edmunds	20	14	0	0	34	28	21	0	0	49	1.6%	
Faulk	45	31	0	0	76	64	46	0	0	110	3.6%	
Grant	19	19	0	0	38	27	28	0	0	55	1.8%	
Hamlin	12	15	0	0	27	17	22	0	0	39	1.3%	
Hand	72	51	10	6	139	102	76	14	9	200	6.5%	
Hanson	16	10	0	0	26	23	15	0	0	38	1.2%	
Hughes	29	8	8	2	47	41	12	11	3	67	2.2%	
Hutchinson	50	28	1	0	79	71	42	1	0	114	3.7%	
Hyde	20	9	1	0	30	28	13	1	0	43	1.4%	
Jerauld	51	28	5	0	84	73	42	7	0	121	3.9%	
Kingsbury	18	10	0	0	28	26	15	0	0	40	1.3%	
Lake	22	12	0	0	34	31	18	0	0	49	1.6%	
Lincoln	7	6	0	0	13	10	9	0	0	19	0.6%	
McCook	27	16	0	0	43	38	24	0	0	62	2.0%	
McPherson	23	32	0	0	55	33	47	0	0	80	2.6%	
Marshall	5	2	0	0	7	7	3	0	0	10	0.3%	
Miner	29	11	1	0	41	41	16	1	0	59	1.9%	
Moody	10	7	0	0	17	14	10	0	0	25	0.8%	
Potter	19	9	0	0	28	27	13	0	0	40	1.3%	
Roberts	31	24	0	0	55	44	36	0	0	80	2.6%	
Sanborn	41	25	0	0	66	58	37	0	0	95	3.1%	
Spink	49	31	1	0	81	70	46	1	0	117	3.8%	
Sully	9	5	4	1	19	13	7	6	1	27	0.9%	
Turner	23	11	0	0	34	33	16	0	0	49	1.6%	
Union	17	10	0	0	27	24	15	0	0	39	1.3%	
Walworth	20	8	8	1	37	28	12	11	1	53	1.7%	
Unknown	100	79	5	2	186							
TOTALS	1,344	852	88	37	2,321	1,768	1,147	115	50	3,080		

Any by county projected harvest values will differ from by unit projected harvest values due to incorrect sampling proportions within counties.
Use these figures for approximations only!

2008 East River Special Buck Harvest Projections

Unit/Type	Licenses				Harvest Projections				Total Deer Harvest	Mean Satisfactn Rating	Average Days Hunted
	Resident		Response Rate	Tag Success	Whitetail		Mule Deer				
	Avail.	Sold			Bucks	Does	Bucks	Does			
ER-01	400	401	85%	59%	205	11	19	0	235	4.23	5.72

Units less than 85% response rate & harvest projections may not be within +/- 15% of sample statistic.

2008 East River Special Buck Harvest Distribution

County	Reported Harvest					Projected Harvest					Total Projected	%
	Whitetail		Mule Deer		Total	Whitetail		Mule Deer				
	Bucks	Does	Bucks	Does		Bucks	Does	Bucks	Does			
Minnehaha	8	1	0	0	9	10	1	0	0	11	4.6%	
Brown	9	0	0	0	9	11	0	0	0	11	4.6%	
Beadle	2	0	0	0	2	2	0	0	0	2	1.0%	
Codington	2	1	0	0	3	2	1	0	0	4	1.6%	
Brookings	7	0	0	0	7	8	0	0	0	8	3.6%	
Yankton	9	0	0	0	9	11	0	0	0	11	4.6%	
Davison	2	0	0	0	2	2	0	0	0	2	1.0%	
Aurora	4	1	0	0	5	5	1	0	0	6	2.6%	
Bon Homme	6	0	2	0	8	7	0	2	0	10	4.1%	
Brule	0	0	0	0	0	0	0	0	0	0	0.0%	
Buffalo	0	0	0	0	0	0	0	0	0	0	0.0%	
Campbell	1	0	1	0	2	1	0	1	0	2	1.0%	
Charles Mix	5	1	7	0	13	6	1	8	0	16	6.6%	
Clark	4	0	0	0	4	5	0	0	0	5	2.1%	
Clay	3	0	0	0	3	4	0	0	0	4	1.5%	
Day	9	0	0	0	9	11	0	0	0	11	4.6%	
Deuel	1	1	0	0	2	1	1	0	0	2	1.0%	
Douglas	0	0	0	0	0	0	0	0	0	0	0.0%	
Edmunds	2	0	0	0	2	2	0	0	0	2	1.0%	
Faulk	1	0	0	0	1	1	0	0	0	1	0.5%	
Grant	1	0	0	0	1	1	0	0	0	1	0.5%	
Hamlin	5	0	0	0	5	6	0	0	0	6	2.6%	
Hand	14	0	2	0	16	17	0	2	0	19	8.2%	
Hanson	3	0	0	0	3	4	0	0	0	4	1.5%	
Hughes	4	0	1	0	5	5	0	1	0	6	2.6%	
Hutchinson	6	0	0	0	6	7	0	0	0	7	3.1%	
Hyde	4	0	0	0	4	5	0	0	0	5	2.1%	
Jerauld	3	0	0	0	3	4	0	0	0	4	1.5%	
Kingsbury	3	0	0	0	3	4	0	0	0	4	1.5%	
Lake	3	1	0	0	4	4	1	0	0	5	2.1%	
Lincoln	5	0	0	0	5	6	0	0	0	6	2.6%	
McCook	3	3	0	0	6	4	4	0	0	7	3.1%	
McPherson	5	0	0	0	5	6	0	0	0	6	2.6%	
Marshall	2	0	0	0	2	2	0	0	0	2	1.0%	
Miner	3	0	0	0	3	4	0	0	0	4	1.5%	
Moody	1	0	0	0	1	1	0	0	0	1	0.5%	
Potter	2	0	0	0	2	2	0	0	0	2	1.0%	
Roberts	3	0	0	0	3	4	0	0	0	4	1.5%	
Sanborn	1	0	0	0	1	1	0	0	0	1	0.5%	
Spink	4	0	0	0	4	5	0	0	0	5	2.1%	
Sully	9	0	2	0	11	11	0	2	0	13	5.7%	
Turner	3	0	0	0	3	4	0	0	0	4	1.5%	
Union	6	0	0	0	6	7	0	0	0	7	3.1%	
Walworth	1	0	1	0	2	1	0	1	0	2	1.0%	
Unknown	4	0	0	0	4							
TOTALS	173	9	16	0	198	205	11	19	0	235		

Any by county projected harvest values will differ from by unit projected harvest values due to incorrect sampling proportions within counties. Use these figures for approximations only!