

PHEASANT

The 2008 pheasant season covered 18 October 2008 – 4 January 2009 statewide. There was also a Youth season open 4-8 October on public and private land and an early residents-only season open 11-13 October on public lands only. The daily limit was 3 cock pheasants, possession 15. To hunt pheasants, residents were required to hold small game, 1-day small game, adult or junior combination, or youth small game licenses; nonresidents were required to obtain the nonresident small game the nonresident youth small game, or nonresident shooting preserve license. Harvest surveys were sent to both resident and nonresident hunters. No shooting preserve license holders were surveyed and none of their harvest is included in any of the data in this report.

In 2008, there were 95,003 resident and 104,899 nonresident licenses issued that allowed holders to hunt pheasants. Approximately 8% of residents and nonresidents were surveyed for the upland bird seasons. Survey response rates were 68.6% for residents and 71.1% for nonresidents.

Based on survey responses indicating at least one day of hunting pheasants, there were a projected 75,978 resident (30,617 small game, 33,738 combination, 5,229 youth small game, 6,394 junior combination) and 100,254 nonresident (97,050 small game, 3,204 youth small game) pheasant hunters.

From the survey responses, a projected total of 1,936,228 pheasants were harvested (877,546 by residents, 1,058,682 by nonresidents) during the 2008 seasons. When asked their satisfaction on the season, (1 being least satisfied, 7 being most satisfied), resident upland bird hunters reported an average satisfaction rating of 5.31 while nonresidents reported a higher satisfaction rating of 5.86.

Approximately 18,811 residents participated in the early, resident-only season. The projected harvest for this season was 40,632 birds.

The Youth-only season (4-8 October) overall participation rate was approximately 8.4% (7.1% Combination license, 6.8% Small Game, 5.8% Junior Combination, 26.7% Youth Small Game); nonresidents were not surveyed on their participation in this season.

Comparison of the 1999 - 2008 Pheasant season statistics

Year	<i>Resident Hunters</i>					<i>Nonresident Hunters</i>				
	<i>Number Hunters</i>	<i>Harvest</i>	<i>Ave Day Hunted</i>	<i>Ave Bag</i>	<i>Satisfaction</i>	<i>Number Hunters</i>	<i>Harvest</i>	<i>Ave Day Hunted</i>	<i>Ave Bag</i>	<i>Satisfaction</i>
1999	84,342	768,356	7.12	9.11	4.60	71,956	695,815	4.57	9.67	5.33
2000	79,790	759,601	6.82	9.52	4.71	70,182	688,133	4.31	9.52	5.20
2001	76,772	672,523	6.80	8.76	4.40	73,326	688,531	4.26	9.39	5.17
2002	70,822	587,823	6.84	8.30	4.28	74,874	673,866	4.18	9.00	5.01
2003	78,396	912,529	7.21	11.64	5.08	83,538	902,210	4.21	10.80	5.72
2004	78,984	744,819	7.35	9.43	4.62	91,948	908,446	3.83	9.88	5.25
2005	79,270	947,277	7.94	11.95	5.19	94,956	1,001,786	4.43	10.55	5.83
2006	79,955	881,904	7.63	11.03	4.99	98,213	964,452	4.29	9.82	5.71
2007	77,788	969,238	7.88	12.46	5.39	103,048	1,153,107	4.61	11.19	6.00
2008	75,978	877,546	7.33	11.55	5.31	100,254	1,058,682	4.49	10.56	5.86

PHEASANT HARVEST PROJECTIONS FOR 2008

Revised: 27 April 09

	RESIDENT TOTALS BY LICENSE TYPE					NONRESIDENT TOTALS		
	Small Game	Combo	Junior Combo	Youth SmGm	Sum Estimates	Nonres Sm Game	Youth Sm Game	Sum Estimates
Licenses Sold	35,754	44,077	7,878	7,294	95,003	101,510	3,389	104,899
Projected ACTIVE UPLAND BIRD HUNTERS	30,720	33,871	5,275	6,450	76,118	97,292	3,204	100,496
Number Sampled by Survey	2,682	3,542	633	605	7,462	7,471	242	7,713
Number Responded to Survey	1,726	2,656	345	389	5,116	5,329	153	5,482
Responded and Participated in Season	1,483	2,041	231	344	4,099	5,236	147	5,383
Responded but DID NOT HUNT	243	615	114	45	1,017	93	6	99
Survey Response Rate	64.4%	75.0%	54.5%	64.3%	68.6%	71.3%	63.2%	71.1%
No. Hunters Reporting Pheasant Days	1,478	2,033	229	341	4,081	5,223	147	5,370
Sum Pheasant Hunted Days	9,356	16,436	1,795	2,336	29,923	23,612	510	24,122
Average Days Hunted Pheasants	6.33	8.08	7.84	6.85	7.33	4.52	3.47	4.49
Sum Pheasants Bagged	14,290	27,950	2,308	2,585	47,133	55,749	961	56,710
Average Pheasant Bag for Season	9.67	13.75	10.08	7.58	11.55	10.67	6.54	10.56
Projected Days Pheasant Hunting	193,806	272,603	40,995	43,799	556,919	438,666	11,118	450,140
Projected No. Pheasant Hunters	30,617	33,738	5,229	6,394	75,978	97,050	3,204	100,254
Projected Pheasant Bag	296,066	463,898	52,708	48,467	877,546	1,035,524	20,954	1,058,682
TOTAL PHEASANT HARVEST =						1,936,228		
RESIDENT-ONLY OPENING WEEKEND:								
No. Hunters Reporting Pheasant Days	276	527	81	129	1,013	-	-	-
Sum Pheasant Hunted Days	431	788	119	198	1,536	-	-	-
Average Days Hunted Pheasants	1.56	1.50	1.47	1.53	1.52	-	-	-
Sum Pheasants Bagged	549	1,218	167	253	2,187	-	-	-
Average Pheasant Bag for Weekend	1.99	2.31	2.06	1.96	2.16	-	-	-
Projected Days Pheasant Hunting	8,919	13,119	2,720	3,701	28,593	-	-	-
Projected No. Pheasant Hunters	5,717	8,746	1,850	2,419	18,811	-	-	-
Projected Pheasant Bag	11,377	20,203	3,811	4,741	40,632	-	-	-
RESIDENT-ONLY WEEKEND PHEASANT HARVEST =						40,632		
MENTORED YOUTH PARTICIPATION:								
No. Hunters Reporting Participation	55	86	NA	NA	141	-	-	-
Projected No. Hunters Participating	1,139	1,427			2,566	-	-	-
Percent Hunters Participating	3.2%	3.2%			3.2%	-	-	-
Upland Bird Hunters Mean Satisfaction Score *	5.25	5.35	5.31	5.31	5.31	5.86	5.87	5.86

* Based on scale of 1-7 with 1="very dissatisfied" and 7="very satisfied"

RESIDENT-ONLY WEEKEND 2008 PHEASANT SEASON PARTICIPATION AND BAG

Last Revised: 4 May 09

	# Days Hunted	# Responded	% of Total	Ave. Bag
Residents	0	4,103	80.2%	
	1	594	11.6%	1.24
	2	315	6.2%	3.04
	3	104	2.0%	5.00

2008 YOUTH-ONLY PHEASANT SEASON PARTICIPATION

Last Revised: 4 May 09

License Type	Number Participated	Did Not Participate	Percent Participated
Small Game	117	1,609	6.8%
Combination	189	2,467	7.1%
Youth Small Game	104	285	26.7%
Junior Combination	20	325	5.8%
Total	430	4,686	8.4%

Resident Pheasant Harvest Distribution by County 2008

COUNTY	HUNTER DISTRIBUTION				HARVEST DISTRIBUTION				Birds/Hunter **
	# Reported	# Projected	% of Total	# Proj w/ Unk *	# Reported	# Projected	% of Total	# Proj w/ Unk *	
Minnehaha	128	2,383	3.3	2,504	953	17,743	2.1	18,440	7.4
Pennington	16	298	0.4	313	74	1,378	0.2	1,432	4.6
Brown	201	3,742	5.2	3,932	2,230	41,519	4.9	43,149	11.1
Beadle	176	3,277	4.5	3,443	2,226	41,445	4.9	43,073	12.6
Codington	133	2,476	3.4	2,602	1,367	25,451	3.0	26,450	10.3
Brookings	148	2,755	3.8	2,895	1,424	26,513	3.1	27,554	9.6
Yankton	49	912	1.3	958	396	7,373	0.9	7,663	8.1
Davison	114	2,122	2.9	2,230	1,082	20,145	2.4	20,936	9.5
Lawrence	0	0	0.0	0	0	0	0.0	0	0
Aurora	113	2,104	2.9	2,211	1,401	26,085	3.1	27,109	12.4
Bennett	26	484	0.7	509	275	5,120	0.6	5,321	10.6
Bon Homme	44	819	1.1	861	374	6,963	0.8	7,236	8.5
Brule	108	2,011	2.8	2,113	1,267	23,590	2.8	24,516	11.7
Buffalo	14	261	0.4	274	163	3,035	0.4	3,154	11.6
Butte	4	74	0.1	78	12	223	0.0	232	3.0
Campbell	35	652	0.9	685	439	8,174	1.0	8,495	12.5
Charles Mix	121	2,253	3.1	2,367	1,545	28,766	3.4	29,896	12.8
Clark	119	2,215	3.1	2,327	1,513	28,170	3.3	29,276	12.7
Clay	38	707	1.0	743	391	7,280	0.9	7,566	10.3
Corson	6	112	0.2	118	63	1,173	0.1	1,219	10.5
Custer	1	19	0.0	20	0	0	0.0	0	0.0
Day	69	1,285	1.8	1,350	734	13,666	1.6	14,203	10.6
Deuel	45	838	1.2	881	526	9,793	1.2	10,178	11.7
Dewey	12	223	0.3	234	211	3,929	0.5	4,083	17.6
Douglas	45	838	1.2	881	568	10,575	1.3	10,990	12.6
Edmunds	94	1,750	2.4	1,839	1,483	27,611	3.3	28,695	15.8
Fall River	9	168	0.2	177	32	596	0.1	619	3.5
Faulk	76	1,415	2.0	1,487	988	18,395	2.2	19,117	13.0
Grant	43	801	1.1	842	449	8,360	1.0	8,688	10.4
Gregory	51	949	1.3	997	513	9,551	1.1	9,926	10.1
Haakon	27	503	0.7	529	151	2,811	0.3	2,921	5.6
Hamlin	90	1,676	2.3	1,761	953	17,743	2.1	18,440	10.6
Hand	82	1,527	2.1	1,604	1,103	20,536	2.4	21,342	13.4
Hanson	37	689	1.0	724	487	9,067	1.1	9,423	13.2
Harding	7	130	0.2	137	73	1,359	0.2	1,412	10.5
Hughes	111	2,067	2.9	2,172	1,275	23,739	2.8	24,671	11.5
Hutchinson	62	1,154	1.6	1,213	734	13,666	1.6	14,203	11.8
Hyde	23	428	0.6	450	323	6,014	0.7	6,250	14.1
Jackson	8	149	0.2	157	50	931	0.1	968	6.2
Jerauld	31	577	0.8	606	541	10,073	1.2	10,469	17.5
Jones	20	372	0.5	391	236	4,394	0.5	4,567	11.8
Kingsbury	82	1,527	2.1	1,604	1,074	19,996	2.4	20,781	13.1
Lake	80	1,489	2.1	1,565	677	12,605	1.5	13,100	8.5
Lincoln	38	707	1.0	743	272	5,064	0.6	5,263	7.2
Lyman	120	2,234	3.1	2,347	1,900	35,375	4.2	36,764	15.8
McCook	78	1,452	2.0	1,526	868	16,161	1.9	16,796	11.1
McPherson	30	559	0.8	587	434	8,080	1.0	8,397	14.5
Marshall	37	689	1.0	724	306	5,697	0.7	5,921	8.3
Meade	8	149	0.2	157	37	689	0.1	716	4.6
Mellette	7	130	0.2	137	107	1,992	0.2	2,070	15.3
Miner	93	1,731	2.4	1,819	1,185	22,063	2.6	22,929	12.7
Moody	49	912	1.3	958	429	7,987	0.9	8,301	8.8
Perkins	37	689	1.0	724	324	6,032	0.7	6,269	8.8
Potter	78	1,452	2.0	1,526	1,412	26,289	3.1	27,321	18.1
Roberts	61	1,136	1.6	1,194	765	14,243	1.7	14,802	12.5
Sanborn	58	1,080	1.5	1,135	570	10,613	1.3	11,030	9.8
Spink	127	2,364	3.3	2,484	1,956	36,418	4.3	37,848	15.4
Stanley	24	447	0.6	470	408	7,596	0.9	7,894	17.0
Sully	65	1,210	1.7	1,271	1,173	21,840	2.6	22,698	18.0
Tripp	96	1,787	2.5	1,878	1,173	21,840	2.6	22,698	12.2
Turner	73	1,359	1.9	1,428	504	9,384	1.1	9,753	6.9
Union	37	689	1.0	724	252	4,692	0.6	4,876	6.8
Walworth	58	1,080	1.5	1,135	781	14,541	1.7	15,112	13.5
Ziebach	7	130	0.2	137	39	726	0.1	755	5.6
Shannon	0	0	0.0	0	0	0	0.0	0	0
Todd	5	93	0.1	98	81	1,508	0.2	1,567	16.2
Unk/Unreported	197	3,668	-	-	1,781	33,160	-	-	9.0
TOTALS:	4,081	75,978	101%	75,986	47,133	877,546	100%	877,543	11.55

Revised: 14 April 09

* Includes unknown county projection values by assuming unknown county values are distributed the same as reported county values. Total values may be different due to rounding.

** Calculation uses "# projected" values without correction for unknown/unreported county values.

Nonresident Pheasant Harvest Distribution by County 2008

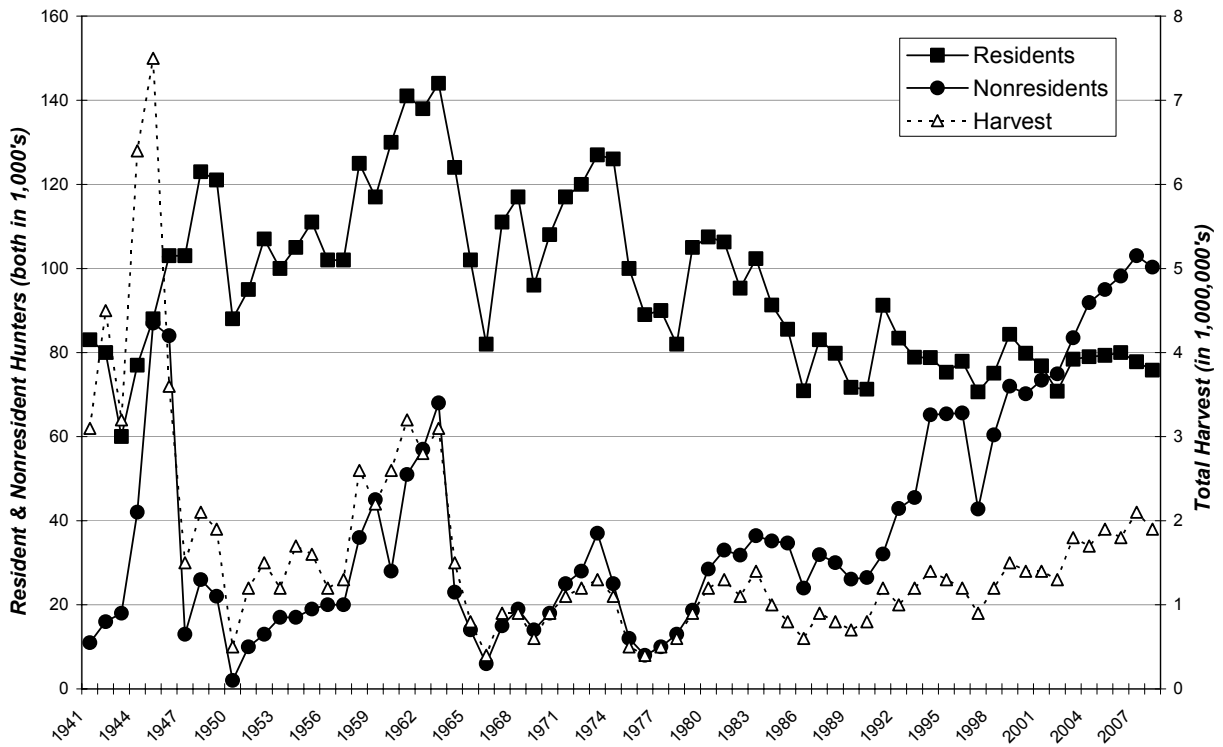
COUNTY	HUNTER DISTRIBUTION				HARVEST DISTRIBUTION				
	# Reported	# Projected	% of Total	# Proj w/ Unk *	# Reported	# Projected	% of Total	# Proj w/ Unk *	Birds/Hunter **
Minnehaha	27	504	0.5	520	179	3,342	0.3	3,422	6.6
Pennington	2	37	0.0	38	21	392	0.0	401	10.6
Brown	384	7,169	7.4	7,398	3,724	69,521	6.7	71,191	9.7
Beadle	331	6,180	6.4	6,377	3,696	68,998	6.7	70,655	11.2
Codington	104	1,942	2.0	2,004	863	16,111	1.6	16,498	8.3
Brookings	82	1,531	1.6	1,580	560	10,454	1.0	10,705	6.8
Yankton	26	485	0.5	500	193	3,603	0.3	3,690	7.4
Davison	280	5,227	5.4	5,394	2,369	44,225	4.3	45,287	8.5
Lawrence	4	75	0.1	77	14	261	0.0	267	3.5
Aurora	182	3,398	3.5	3,506	1,937	36,161	3.5	37,029	10.6
Bennett	12	224	0.2	231	125	2,334	0.2	2,390	10.4
Bon Homme	20	373	0.4	385	201	3,752	0.4	3,842	10.1
Brule	287	5,358	5.5	5,529	2,876	53,690	5.2	54,979	10.0
Buffalo	26	485	0.5	500	233	4,350	0.4	4,454	9.0
Butte	7	131	0.1	135	74	1,381	0.1	1,414	10.5
Campbell	75	1,400	1.4	1,445	846	15,793	1.5	16,172	11.3
Charles Mix	128	2,390	2.5	2,466	1,426	26,621	2.6	27,260	11.1
Clark	179	3,342	3.4	3,449	1,821	33,995	3.3	34,811	10.2
Clay	6	112	0.1	116	38	709	0.1	726	6.3
Corson	11	205	0.2	212	99	1,848	0.2	1,892	9.0
Custer	1	19	0.0	20	10	187	0.0	191	9.8
Day	121	2,259	2.3	2,331	1,103	20,591	2.0	21,086	9.1
Deuel	27	504	0.5	520	242	4,518	0.4	4,627	9.0
Dewey	21	392	0.4	405	245	4,574	0.4	4,684	11.7
Douglas	61	1,139	1.2	1,175	643	12,004	1.2	12,292	10.5
Edmunds	146	2,726	2.8	2,813	1,952	36,441	3.5	37,316	13.4
Fall River	2	37	0.0	38	10	187	0.0	191	5.1
Faulk	151	2,819	2.9	2,909	1,875	35,003	3.4	35,844	12.4
Grant	14	261	0.3	269	101	1,886	0.2	1,931	7.2
Gregory	209	3,902	4.0	4,026	2,065	38,550	3.7	39,476	9.9
Haakon	16	299	0.3	309	162	3,024	0.3	3,097	10.1
Hamlin	37	691	0.7	713	364	6,795	0.7	6,958	9.8
Hand	185	3,454	3.6	3,564	2,266	42,302	4.1	43,318	12.2
Hanson	31	579	0.6	597	298	5,563	0.5	5,697	9.6
Harding	1	19	0.0	20	9	168	0.0	172	8.8
Hughes	113	2,110	2.2	2,177	1,049	19,583	1.9	20,053	9.3
Hutchinson	40	747	0.8	771	428	7,990	0.8	8,182	10.7
Hyde	25	467	0.5	482	250	4,667	0.5	4,779	10.0
Jackson	12	224	0.2	231	121	2,259	0.2	2,313	10.1
Jerauld	74	1,382	1.4	1,426	829	15,476	1.5	15,848	11.2
Jones	48	896	0.9	925	533	9,950	1.0	10,189	11.1
Kingsbury	82	1,531	1.6	1,580	750	14,001	1.4	14,337	9.1
Lake	33	616	0.6	636	333	6,217	0.6	6,366	10.1
Lincoln	6	112	0.1	116	31	579	0.1	593	5.2
Lyman	250	4,667	4.8	4,816	3,133	58,488	5.7	59,893	12.5
McCook	17	317	0.3	327	141	2,632	0.3	2,695	8.3
McPherson	103	1,923	2.0	1,984	1,172	21,879	2.1	22,404	11.4
Marshall	40	747	0.8	771	371	6,926	0.7	7,092	9.3
Meade	2	37	0.0	38	2	37	0.0	38	1.0
Mellette	17	317	0.3	327	172	3,211	0.3	3,288	10.1
Miner	83	1,550	1.6	1,599	1,040	19,415	1.9	19,881	12.5
Moody	5	93	0.1	96	53	989	0.1	1,013	10.6
Perkins	14	261	0.3	269	154	2,875	0.3	2,944	11.0
Potter	102	1,904	2.0	1,965	1,471	27,461	2.7	28,121	14.4
Roberts	36	672	0.7	693	339	6,329	0.6	6,481	9.4
Sanborn	93	1,736	1.8	1,791	891	16,633	1.6	17,032	9.6
Spink	280	5,227	5.4	5,394	3,445	64,312	6.2	65,857	12.3
Stanley	34	635	0.7	655	319	5,955	0.6	6,098	9.4
Sully	69	1,288	1.3	1,329	917	17,119	1.7	17,530	13.3
Tripp	286	5,339	5.5	5,509	3,250	60,672	5.9	62,129	11.4
Turner	30	560	0.6	578	253	4,723	0.5	4,836	8.4
Union	4	75	0.1	77	37	691	0.1	708	9.2
Walworth	105	1,960	2.0	2,023	1,217	22,719	2.2	23,265	11.6
Ziebach	2	37	0.0	38	20	373	0.0	382	10.1
Shannon	1	19	0.0	20	9	168	0.0	172	8.8
Todd	2	37	0.0	38	10	187	0.0	191	5.1
Unk/Unreported	166	3,099	-	-	1,330	24,829	-	-	8.0
TOTALS	5,370	100,254	100%	100,252	56,710	1,058,682	100%	1,058,675	10.56

Revised: 14 April 09

* Includes unknown county projection values by assuming unknown county values are distributed the same as reported county values. Total values may be different due to rounding.

** Calculation uses "# projected" values without correction for unknown/unreported county values.

SOUTH DAKOTA PHEASANT HARVEST 1941-2008



SOUTH DAKOTA PHEASANT HUNTERS AND AVERAGE SEASON HARVEST 1941-2008

