

NATIONAL WILDLIFE REFUGE DEER

There were a total of 508 licenses issued for the 2008 Wildlife Refuge Deer seasons, which included 399 at Sand Lake (362 residents and 37 nonresidents); 43 at Lacreek (39 residents and 4 nonresidents); and 66 at Waubay (62 residents and 4 nonresidents).

All license-holders for each season were surveyed and response rates for Sand Lake, Lacreek, and Waubay refuges were 82%, 86%, and 74%, respectively. Approximately 33% of responding hunters used the Internet response system.

The seasons had different opening dates at each refuge. The average days hunted were 3.39 at Sand Lake, 2.43 at Lacreek and 2.29 at Waubay.

The reported harvest at the refuges consisted only of white-tailed deer. The projected harvest for Sand Lake was 86 bucks and 112 does, for Lacreek was 11 bucks and 6 does, and for Waubay was 17 bucks and 5 does. The projected success rate for Sand Lake was 25%, for Lacreek was 40%, and for Waubay was 33%.

Harvest summaries for 2000-2008 National Wildlife Refuge Deer Seasons

SAND LAKE NATIONAL WILDLIFE REFUGE

YEAR	LICENSES	BUCKS	DOES	% SUCCESS	AVE DAYS HUNTED
2000	594	130	86	36%	2.04
2001	593	136	68	34%	2.50
2002	594	174	67	41%	2.61
2003	594	169	50	37%	2.60
2004	436	80	92	30%	2.56
2005	420	73	75	28%	2.71
2006	444	92	79	29%	2.81
2007	436	103	83	33%	2.68
2008	399	86	112	25%	3.39

LACREEK NATIONAL WILDLIFE REFUGE

YEAR	LICENSES	BUCKS	DOES	% SUCCESS	AVE DAYS HUNTED
2000	44	7	4	25%	2.79
2001	44	11	1	27%	1.86
2002	44	9	4	30%	2.30
2003	44	10	5	34%	2.40
2004	44	16	3	43%	2.83
2005	45	10	8	40%	2.93
2006	38	10	5	39%	2.56
2007	43	16	6	51%	2.78
2008	43	11	6	40%	2.43

WAUBAY NATIONAL WILDLIFE REFUGE

YEAR	LICENSES	BUCKS	DOES	% SUCCESS	AVE DAYS HUNTED
2000	71	15	12	38%	2.29
2001	71	14	12	37%	2.30
2002	71	14	9	32%	2.04
2003	71	31	13	62%	1.74
2004	70	26	11	53%	2.32
2005	71	27	8	49%	2.00
2006	71	14	11	35%	2.62
2007	71	19	13	33%	2.07
2008	66	17	5	33%	2.29

2008 Sand Lake Refuge Deer Harvest Projections

Unit/Type	Licenses						Response Rate	Unit/Subunit Success	Harvest Projections				Total Deer Harvested	Mean Satisfaction Score	Avg Days Hunted
	Resident			Nonresident					Whitetail		Mule Deer				
	Appl. 1st Choice *	Available	Sold	Appl. 1st Choice *	Available	Sold			Bucks	Does	Bucks	Does			
SL1-08	203	55	55	14	5	5	92%	52%	22	9	0	0	31	4.29	3.13
Same Season 2nd Tag								20%	0	12	0	0	12		
SL1-09	3	40	43	1	4	1	75% #	30%	1	12	0	0	13	4.06	2.58
Same Season 2nd Tag								11%	0	5	0	0	5		
SL2-08	165	55	55	21	5	5	87%	72%	31	12	0	0	43	4.58	3.23
Same Season 2nd Tag								17%	1	9	0	0	10		
SL2-09	0	40	20	0	4	3	91%	43%	0	10	0	0	10	4.24	3.95
Same Season 2nd Tag								13%	0	3	0	0	3		
SL3-08	36	55	54	7	5	5	81% #	39%	17	6	0	0	23	4.23	3.17
Same Season 2nd Tag								19%	1	10	0	0	11		
SL3-09	0	40	4	1	4	1	100%	60%	1	2	0	0	3	3.80	2.20
Same Season 2nd Tag								40%	0	2	0	0	2		
SL4-08	45	55	56	1	5	5	74% #	38%	11	12	0	0	23	3.42	4.84
Same Season 2nd Tag								7%	0	4	0	0	4		
SL4-09	0	40	7	0	4	2	100%	44%	1	3	0	0	4	3.44	4.78
Same Season 2nd Tag								11%	0	1	0	0	1		
SL5-08	66	55	55	5	5	5	75% #	33%	12	8	0	0	20	4.39	2.95
Same Season 2nd Tag								8%	0	5	0	0	5		
SL5-09	0	40	13	1	4	5	83% #	39%	0	7	0	0	7	4.00	3.07
Same Season 2nd Tag								11%	0	2	0	0	2		
Licenses	518	475	362	51	45	37	82.2%	# 25%	86	112	0	0	198	4.15	3.39
Tags		950	724		90	74									

2008 Lacreek Refuge Deer Harvest Projections

Unit/Type	Licenses						Response Rate	Unit/Subunit Success	Harvest Projections				Total Deer Harvested	Mean Satisfaction Score	Avg Days Hunted
	Resident			Nonresident					Whitetail		Mule Deer				
	Appl. 1st Choice *	Available	Sold	Appl. 1st Choice *	Available	Sold			Bucks	Does	Bucks	Does			
LC1-11	59	15	15	7	2	2	76%	# 24%	3	1	0	0	4	4.46	2.92
LC1-13	0	5	4	0	1	0	100%	50%	0	2	0	0	2	4.75	1.50
LC2-11	93	15	15	7	2	2	88%	47%	8	0	0	0	8	5.87	2.40
LC2-13	1	5	5	0	1	0	100%	60%	0	3	0	0	3	5.60	2.00
Licenses	153	40	39	14	6	4	86.0%	40%	11	6	0	0	17	5.22	2.43

All units require the use of muzzleloader firearms.

2008 Waubay Refuge Deer Harvest Projections

Unit/Type	Licenses						Response Rate	Unit/Subunit Success	Harvest Projections				Total Deer Harvested	Mean Satisfaction Score	Avg Days Hunted
	Resident			Nonresident					Whitetail		Mule Deer				
	Appl. 1st Choice *	Available	Sold	Appl. 1st Choice *	Available	Sold			Bucks	Does	Bucks	Does			
WA1-01	38	20	20	0	2	2	77%	# 27%	6	0	0	0	6	4.29	2.88
WA2-01	12	20	22	0	2	0	77%	# 23%	4	1	0	0	5	3.65	2.12
WA3-01	31	20	20	5	2	2	68%	# 50%	7	4	0	0	11	3.33	1.80
Licenses	81	60	62	5	6	4	74.2%	# 33%	17	5	0	0	22	3.78	2.29

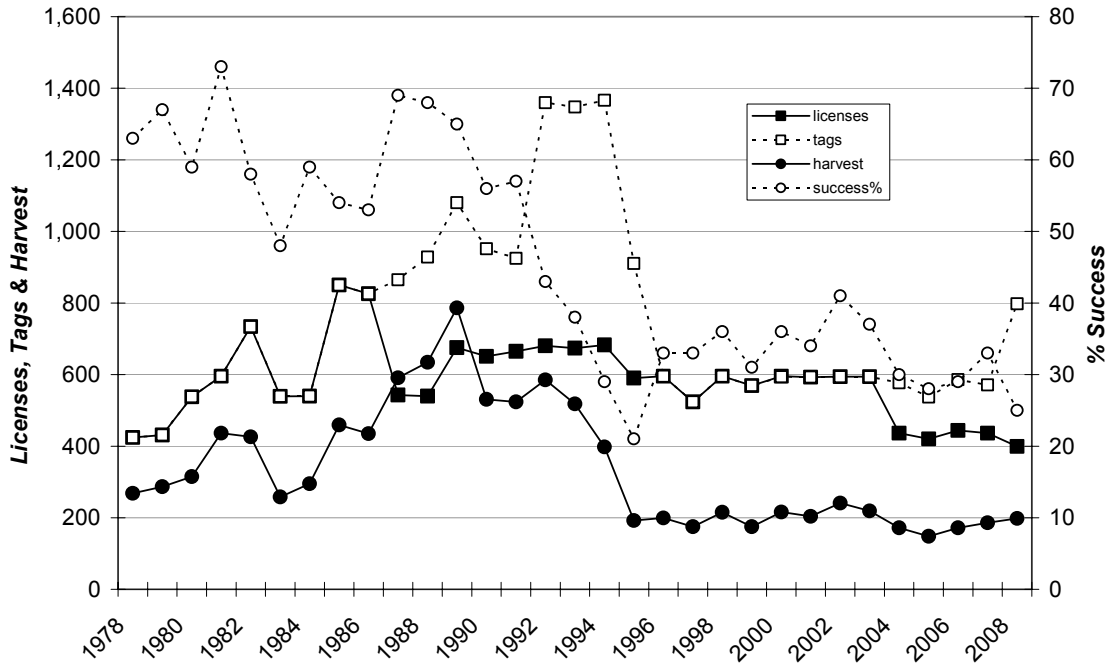
Response rate for all units combined was:

81.5%

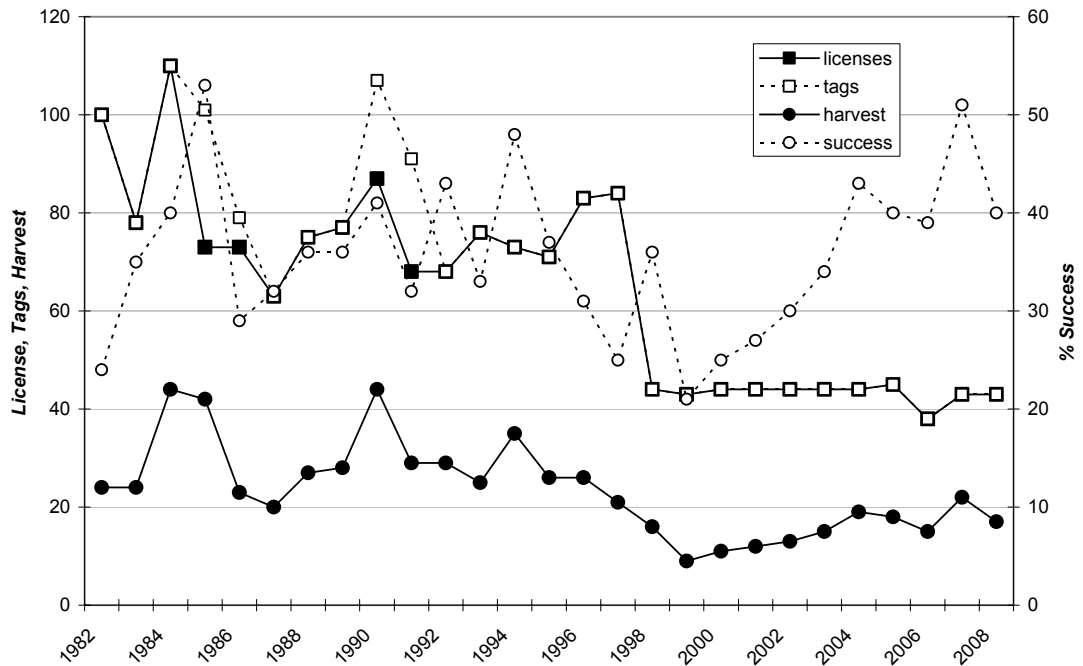
Units with less than 85% response rate and may not be within accepted tolerance for data accuracy.

* Number of 1st drawing applicants with that season as 1st choice.

Sand Lake National Wildlife Refuge 1978-2008



Lacreek National Wildlife Refuge 1982-2008



Waubay National Wildlife Refuge 1987-2008

